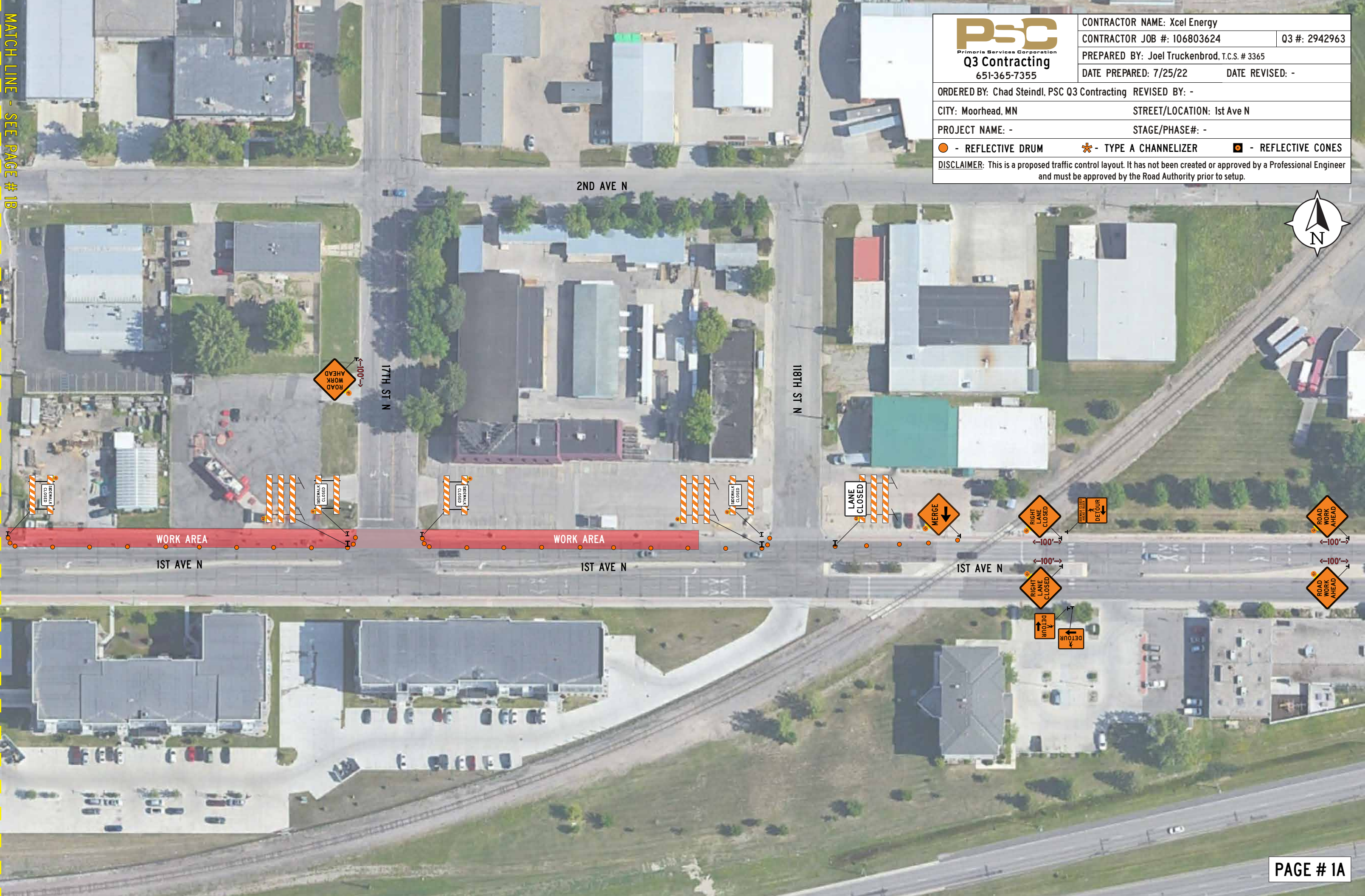



MATCH LINE - SEE PAGE # 1B

16TH ST N





Q3 Contracting
651-365-7355

CONTRACTOR NAME: Xcel Energy	
CONTRACTOR JOB #: 106803624	Q3 #: 2942963
PREPARED BY: Joel Truckenbrod, T.C.S. # 3365	
DATE PREPARED: 7/25/22	DATE REVISED: -
ORDERED BY: Chad Steindl, PSC Q3 Contracting REVISED BY: -	
CITY: Moorhead, MN	STREET/LOCATION: 1st Ave N
PROJECT NAME: -	STAGE/PHASE#: -
● - REFLECTIVE DRUM ✱ - TYPE A CHANNELIZER ◼ - REFLECTIVE CONES	
DISCLAIMER: This is a proposed traffic control layout. It has not been created or approved by a Professional Engineer and must be approved by the Road Authority prior to setup.	

Primoris Services Corporation

Q3 Contracting

651-365-7355

CONTRACTOR NAME: Xcel Energy

CONTRACTOR JOB #: 106803624

PREPARED BY: Joel Truckenbrod, T.C.S. # 3365

DATE PREPARED: 7/25/22

Q3 #: 2942963

DATE REVISED: -

ORDERED BY: Chad Steindl, PSC Q3 Contracting

REVISED BY: -

CITY: Moorhead, MN

STREET/LOCATION: 1st Ave N

PROJECT NAME: -

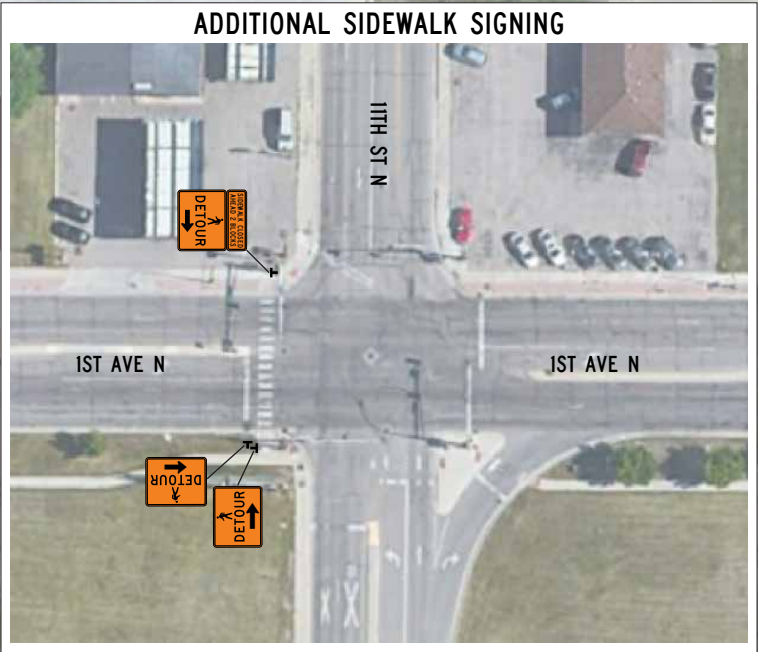
STAGE/PHASE#: -

● - REFLECTIVE DRUM

✱ - TYPE A CHANNELIZER

⬮ - REFLECTIVE CONES

DISCLAIMER: This is a proposed traffic control layout. It has not been created or approved by a Professional Engineer and must be approved by the Road Authority prior to setup.





Q3 Contracting
651-365-7355

CONTRACTOR NAME: Xcel Energy

Q3 #:	2942963
-------	---------

PREPARED BY: Joel Truckenbrod, T.C.S. # 3365

DATE REVISED: -

ORDERED BY: Chad Steindl, PSC Q3 Contracting REVISED BY: -

STREET/LOCATION: 1st Ave N

STAGE/PHASE#: -

 - REFLECTIVE CONES

DISCLAIMER: This is a proposed traffic control layout. It has not been created or approved by a Professional Engineer and must be approved by the Road Authority prior to setup.



MATCH LINE - SEE PAGE # 2B

16TH ST N

2ND AVE N

15TH ST N

14TH ST N

1ST AVE N

1ST AVE N

1ST AVE N

WORK AREA

WORK AREA

CLOSED



14TH ST N

PAGE # 2A

