



PHASE 3 ENGAGEMENT SUMMARY

Event Description

On the week of July 19 (titled “Design Week”), the project team hosted a series of community engagement events aimed at testing how city-wide goals should be applied to specific focus areas. The team hosted a Design Festival open house event at the Hjemkomst Center focused on conversations about the city as a whole and specific focus areas, followed the next day by a series of “walkshops” (a play on *walking* and *workshop*) in each of the defined focus areas. There was also a virtual open house website (storymap) with integrated survey to share information and garner feedback similar to the in-person events.

Key Takeaways

People see Moorhead as a great place to live that’s peaceful and appropriate for raising a family – with pride in the schools, sports, and arts. At the same time, people feel that there is a lack of activity and opportunity to retain young residents from moving away. Much of the conversations about the future of the city include a need for more robust parks and park programming, and a need for greater pedestrian connectivity between parks, the river, and downtown – demands consistently at odds with limited funding, and limited tax base available for making the very improvements considered necessary for increasing that tax base and funds available.

People see opportunities lost to Fargo and watch neighbors cross the river for many of their daily needs, and recreational and entertainment options. At the same time, people see great potential in Moorhead and view regional collaboration as crucial to the success of Moorhead. Through the swaths of surface parking lots and wide roadways, people see an artsy culture with relics of the past and potential to build a connected community that is attractive and comfortable for Moorhead residents and visitors.

Focus Area 1: Viking Ship Park

People seem to have good feelings toward Viking Ship Park because of its surroundings by the river, the cross-county ski trails, and the lit tunnel installation. At the same time, people feel that the park and its assets are not being fully leveraged – with regular flooding (including powerful ice dams) being a persistent challenge and seeming barrier to adding new infrastructure. People wrote that they wanted places to hold events (including lighting and electric outlets), wayfinding and trail connections that provide a ‘front door’ to the park, and landscaping that enhances and strengthens the natural environment and that is resilient through flood events. Lack of staff and funding is another persistent barrier – perhaps overcome through community visioning and programming that communicates value in parks.

Focus Area 2: Downtown

People see downtown as a quirky, interesting place even with the sense of vacancy many associate with the area. The remaining small businesses, historic buildings, bars, and restaurants are some of the things that keep people connected to downtown (though some thought there were a surplus of bars). The large areas of surface parking, and wide roadways crossing the railroad tracks are some of the things make people uncomfortable sticking around. Trees and other urban agriculture were elements that some suggested necessary for creating a more comfortable environment. Others expressed a desire for more stores and shops – something likely attainable only with a street and public realm that is comfortable and attractive to perspective clients.



Focus Area 3: EasTen

It was perhaps more difficult for most people to envision a future different than current conditions in EasTen because of its massive scale and highway orientation. People really like and depend upon the businesses and restaurants in the area and desired more connectivity – through pedestrian connections, trees and landscaping, and infill development. Like downtown there are many wide-open spaces in EasTen, but it lacks any historic buildings to provide (even limited) human scaled environments. Planned reconstruction of the wide highway corridor was considered a potential catalytic opportunity, along with potential transit improvements.

Focus Area 4: Holiday

Like EasTen, fewer people engaged on the Holiday area perhaps because it was more difficult to envision a future here much different than its current condition. Holiday is another area with wide swaths of open spaces divided only by low lying buildings and some trees that are small in comparison to the vast environment. Like EasTen again, people like and rely upon the businesses in the area but would like better connections to and from those businesses. Those that participated did see greater opportunity with the landscape by planting more trees and natural grasses, and by providing better walking environments between Holiday, the high-density housing to the east, and the nearby riverbend to the west.

Focus Area 5: Comstock area

The Comstock neighborhood and surrounding areas are some where people feel especially comfortable and want to protect. Surrounding the colleges, this is an area with historic homes and tree lined streets. It's also an area with a high rate of (student) rentals which is a point of contention when rental properties are not maintained to the same standard. Some saw infill development (primarily along 8th Street) as an opportunity for better-maintained student housing and neighborhood services so long as development was complimentary of the existing neighborhood – with one recent mixed-use development as a success story of development enhancing the character of the neighborhood.

Focus Area 6: MCCARA

The MCCARA Industrial Park received less attention in community engagement as it likely doesn't have much impact on residents day-to-day life. Some thought better multi-modal connections between surrounding areas and the industrial park could help attract employees but primary takeaways included the need to address restrictive covenants within the industrial park, potential addition of MATBUS on-demand service and generally the value of MCCARA as a dedicated space for industrial uses adjacent to I-94.

Building Trust

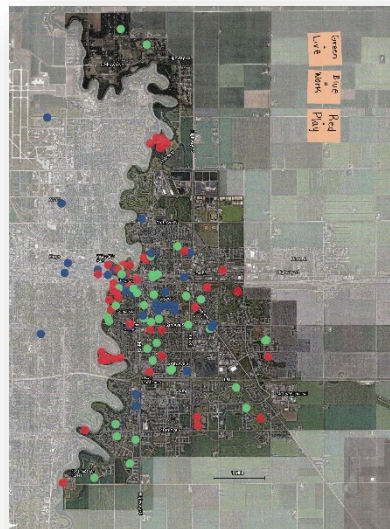
Beyond the information shared during Design Week was value in community conversations as they contribute to trust in community, city government, and momentum for the future. By providing agency for community members to be heard and genuinely impact policy and capital investment helps encourage engagement in future events.

Live, Work, Play

Live (green): Most said they live south of downtown and centralized around the greater Comstock area and colleges.

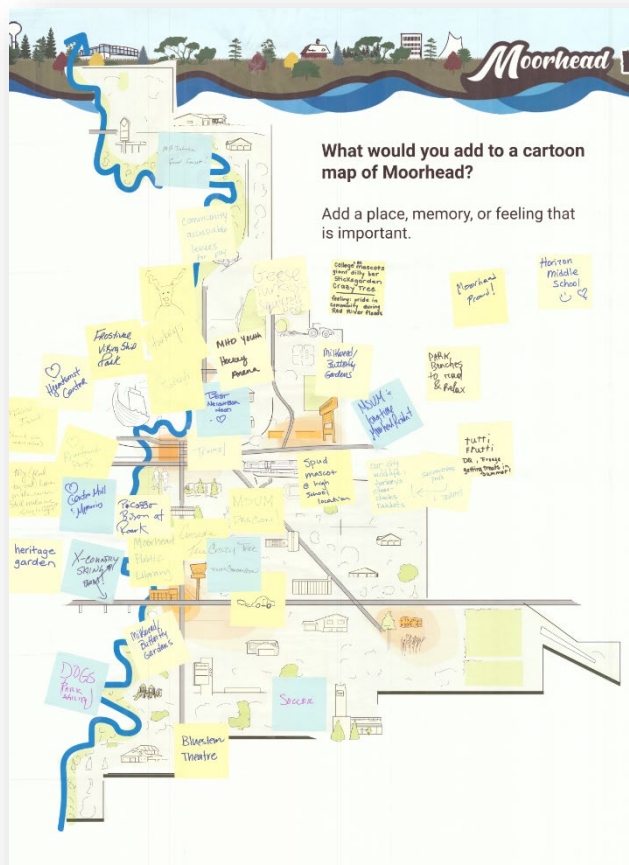
Work (blue): The greatest centralization of participants' workplaces were at MSUM, some downtown, and others sprinkled between Fargo to 8th Street, Main Ave, and 10/75 commercial strips.

Play (red): Most marked places they play along the river and other places downtown, MB Johnson Park, and other parks and schools across Moorhead.



Participants were asked to add a drawing or written statement to a cartoon map of Moorhead.

- MB Johnson Food Forest
- Community accessible levees for play
- Geese, Turkeys, Squirrels, Deer
- College and HS mascots giant dilly bar sticks, garden, crazy tree – Feeling: pride in community during Red River floods
- Moorhead proud
- Horizon Middle School
- Park benches to read and relax
- Milkweed butterfly gardens
- Tutti Frutti DQ, freeze getting treats in summer!
- **Our wildlife:** turkeys, deer, ducks, rabbits
- Second the commend above and trains
- Spud **mascot** at high school location

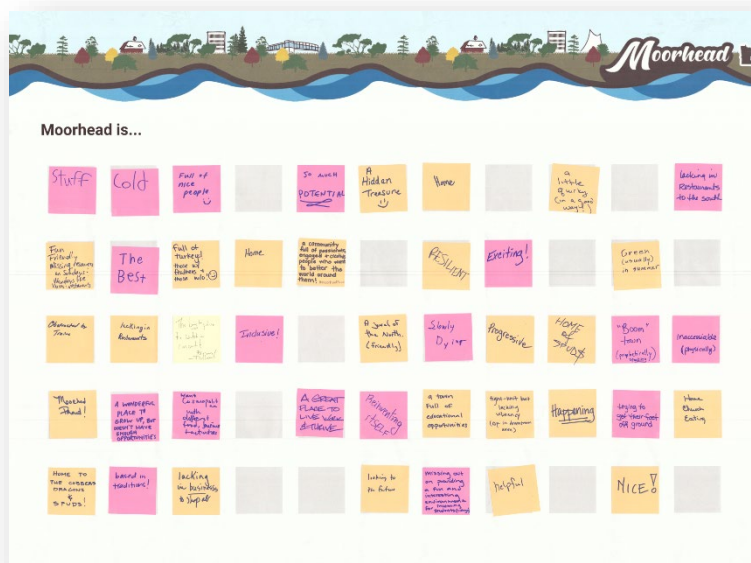




- MSUM and longtime Moorhead resident
- MSUM Dragon
- **Crazy Tree** near Concordia
- Concordia Tree
- Moorhead Public Library
- Picasso Bison at Roar K
- Center Mall memorial
- Riverfront Park
- **Trains**
- Heritage Garden
- Turkeys
- Turkeys
- Frostival Viking Ship **park**
- Hjemkomst Center
- “Friend island”
- My (flood by-out) home on the river – still makes me cry to have to leave it
- Bluestem theatre
- Soccer
- Milkweed/**Butterfly** gardens
- Best neighborhood
- MHD Youth Hockey Arena
- Dog park Facility

Moorhead is...

Participants were asked to write a short statement that they think best describes Moorhead.



- Full of nice people
- So much potential
- A hidden treasure
- Home
- **A little quirky (in a good way!)**
- Lacking in restaurants to the south
- Green (usually) in summer
- Exciting!
- Resilient
- A community full of passionate, engaged and creative people who want to better the world around them
- Home
- Full of Turkeys! Those with feathers and those w/o!
- The best,
- Fun, friendly, missing resources on Sundays and Mondays kuje buses and restaurants.
- Obstructed by trains
- Lacking in restaurants
- Obstructed by trains
- The best place to watch concert! Bluestem/Trollwood
- Inclusive
- A jewel of the north (**Friendly**)
- Slowly Dying
- Progressive
- Home of Spuds
- “Boom” Town (prophetically speaking)
- **Inaccessible (Physically)**
- Home, Church, eating
- Trying to get their feet off the ground
- Happening
- **Tight-knit but lacking vibrancy** (esp. In downtown area)
- A town full of educational opportunities
- Reinventing itself
- A great place to live, work and thrive
- Want cosmopolitan with different food, business and activities



- A wonderful place to grow up, but doesn't have enough opportunities
- Moorhead proud!
- Home to the cobber's dragon and SPUDS

- Based in traditions
- Lacking in business to shop at
- Looking to the future
- Missing out on providing a fun and interesting

environment for incoming students (college)

- Helpful
- Nice!

Moorhead is... (from Cruise Night)

- Bold
- Friendly
- Creative
- Kind, Compassionate, and diverse
- Fun
- Diverse
- Artsy
- Unexpected

- Moorhead Paradise
- Friendly! The perfect place to live!
- Dog friendly
- If I visit MHD, why would I go? Hjenkomst and Comstock but improve development to entry points would

be such a boost to 1st impression.

- Cars
- Inclusive to the disabled
- Car show friendly
- Friendly and Vibrant
- Bike and trails

Vision Framework

Participants were asked to review mission, vision, and value statement developed over the last phases.

Mission comments:

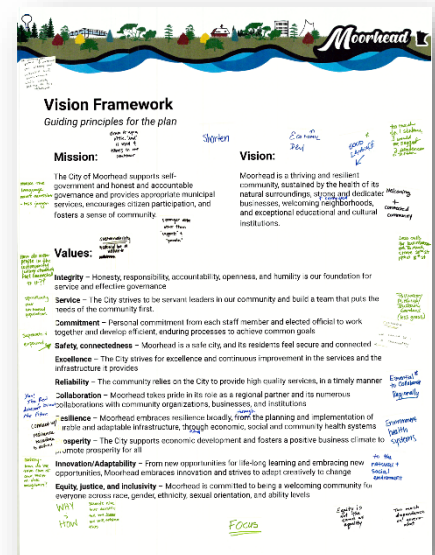
- Make language more accessible – less jargon
- Clean it up a little. "and" is used 4 times in a sentence
- Stronger verbs other than "support" and "provides"

Vision comments:

- Shorten
- Economic
- Good Language
- Too much on 1 sentence, I would suggest 2 sentences or shorten
- Welcoming and connected community
- Add something like: Value and Preserve our history and historical built environment while boldly looking to the future

Values comment:

- How do new people in the community (college students) feel connected to it?
- Specifically, our un-housed population
- Separate and expand [Safety, connectedness]



- Yes! The Red doesn't break the fiber.



- Connect w/ resilience taskforce to define
 - Safety - how do we take care of our most at-risk neighbors
 - Why and How [Equity, justice, and inclusivity]
 - Sounds nice but doesn't tell me how we will
- achieve this [Equity, justice, and inclusivity]
 - Focus
 - Equity is not the same as equality
 - Too much dependence on government
 - To the natural and social environment
 - Environment health systems
- Essential to collaborate regionally
 - Connected – We should be a community
 - Pollinator/Milkweed butterfly gardens (less grass)
 - Less calls for law enforcement. Too much crime 20th st 19th st 18 st

Visual Preference Survey

Add dots to show your preferences within each category.

1

Residential Building Types

Mobility and streets

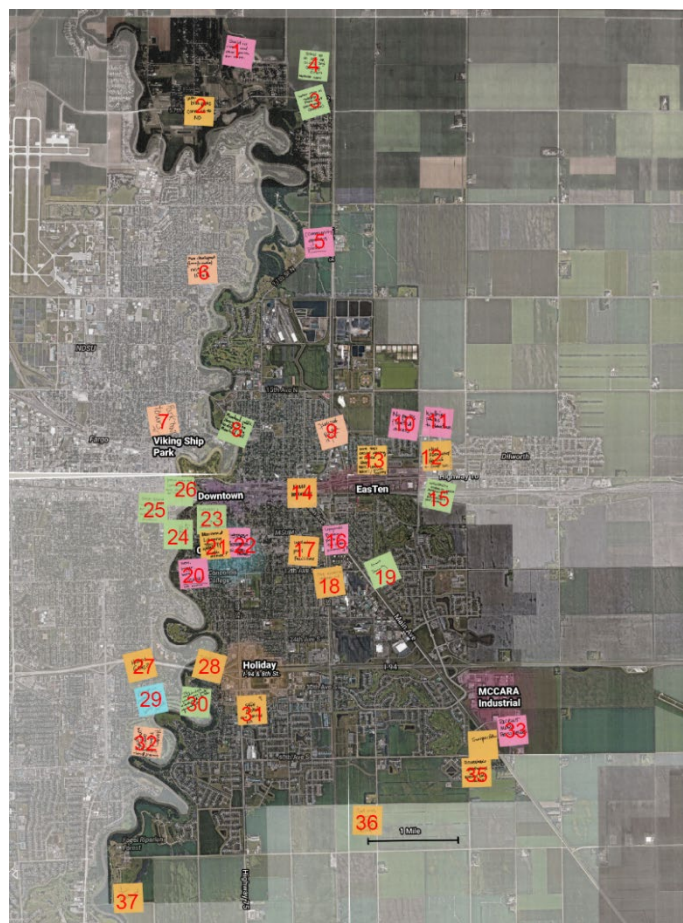
Parks and open space

Residential Building Types: medium density (to high) with an industrial/modern aesthetic
Mobility and Streets: Winter walkability and plaza/shared street
Parks and Open Space: Smaller/curated spaces



Big Map of Moorhead

1. Build ice rinks, and other youth fun stuff.
2. Safe Bike paths connect to ND
3. Connected communities like during disaster but outside disaster
4. North Moorhead would be good for kids to be able to go places
5. Community gardens please!
6. More development (Comm/Individual) North of 15th ave N
7. Park **Trail** Tours
8. Moorhead Public library to be located in the Moorhead Mall
9. Splash Pads NE Park 18th / 8th
10. No Parks and limited access
11. Walking paths to downtown
12. New apartment housing. Bright skies
13. More fast casual dining or coffee shops MHS/Lake travel/ Youth hockey
14. NOMO Walkability
15. **Walkability, bikability needs improvement.** More businesses and foods and cafes
16. Upgrade Romkey parks and public swimming pool
17. Update swimming pool facilities
18. More exercise stations outside
19. More security
20. New, bigger, and better library with windows
21. Moorhead Library updated! South annex?
22. Historic preserve
23. Business and **places for activity** that attracts students
24. Interactive park
25. Create accessible sidewalks for people to actually use downtown
26. Protect **unhoused** community while downtown develops
27. Hidden Gems?
28. Trader Joes
29. Play up on crystal sugar tours bakery to have desserts
30. This neighborhood needs some "park" and sidewalk or the equivalent
31. Safe Haven new full housing
32. Planting natural areas. Milkweed and clover for butterflies
33. Recruit more businesses
34. Transportation
35. Accessible pathways and actual sidewalks
36. Need more business in Moorhead, especially South Moorhead
37. Love Trollwood



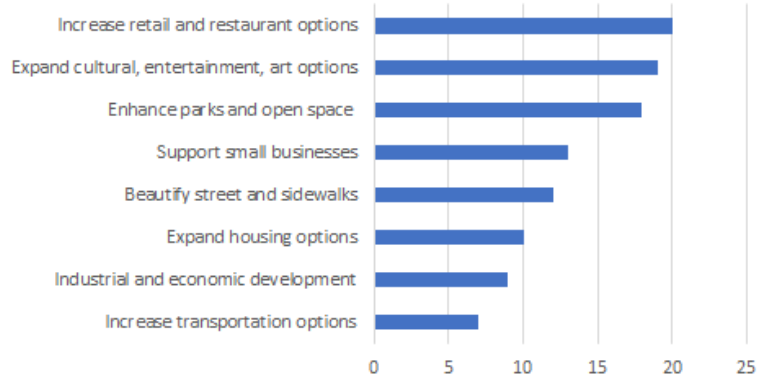


Moorhead Moolah

Participants were asked if to invest imaginary money into 3 categories of their choosing.

These categories got over 15 moolah:

- (1) increase retail and restaurant options
- (2) expand cultural, entertainment, art options
- (3) enhance parks and open space.



Other/write-in

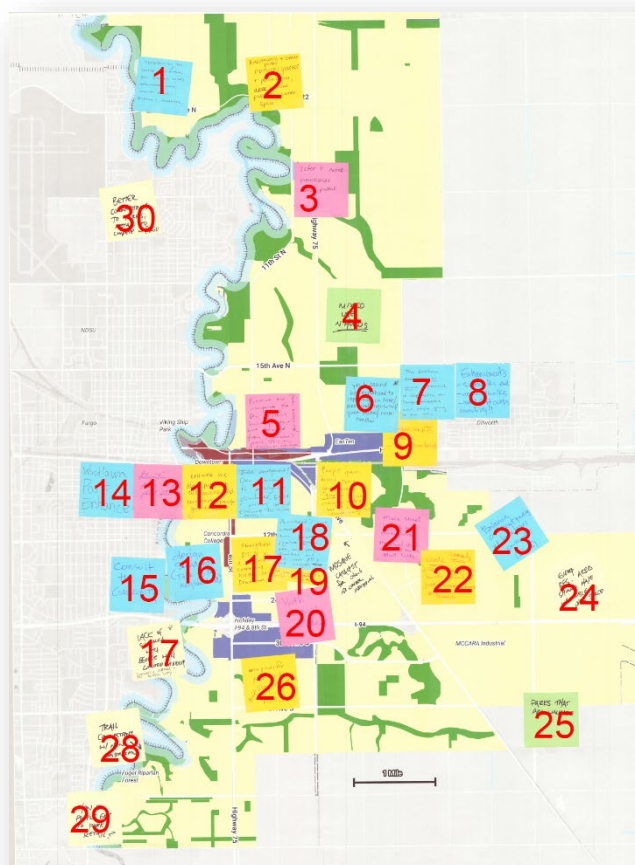
- Interested in opportunities to create racial and social equity -> broadband access, food security, accessible and affordable transportation
- Public library
- Youth community Center
- Invest in environmental and health resilience (climate change adaptations, air, h2o, soil health)
- Other
- Mitigating against all hazards through infrastructure, community education, city staff, community connectedness
- Drama, music, small/large get us out to meet others
- Like a downtown square
- Replace grassy areas with pollinator plants and milkweed
- Bike and walk and skiing options
- We need fascinating "places" along main – on store front there has been empty for years
- Expand housing options for unhoused and low-income neighbors
- Take into account our homeless or unhoused population / more survives/ space
- Increase housing options and pathways for low-income individuals
- Establish a community center for actual __ training
- Law enforcement
- Advocate on state level so Twin Cities understanding there are other __ of the state
- Increase law enforcement
- Law enforcement enhancement
- Make sure broadband and wifi is available for everyone in Moorhead
- Make a space where college students and visiting families want to be
- Increase employment opportunities thru increased econ and industrial clout
- Activity center in downtown Moorhead stage small toys
- Add trees and shelter to walking paths to make them more usable and accessible
- Add trees to walking paths (eastern) make all areas walkable
- O used to only go to Herberger's and thus the center mall, easy and accessible and sensible



STEP Framework

Participants were asked to react to draft Land Use Framework map and category descriptions organized into four categories: STEP (**Strengthen**, **Transform**, **Enhance**, **Protect**).

1. Opportunity to build an area for North MHD residents who can't drive. Bikes and walkers
2. Brentwood and other parks natural grasses and pollination and more **purposeful** comm. space
3. Safer and more intentional bike paths
4. Mixed used neighborhoods
5. Preserve and incorporate the few **historic** buildings that have survived from Moorhead's past. It's our cultural heritage
6. Yes! Should be revitalized to capitalize on lake/Moorhead high school/ youth hockey rink traffic
7. The Easten area has so much potential to **capitalize** on target shoppers and people going to the lake
8. Enhancements: Sidewalk end, no crosswalks, need ADA curbs, accessibility!
9. Enhancements: trees, neighborhoods
10. Purple spaces aren't spaces you **want to stay** in or even really go to. You sort of have to (bank, grocery, ect)
11. Fulfill development! Our downtown is parking-lot dominated. Build parking lot



- and eliminate the surface parking!
12. Ensure we don't push out our unhoused neighbors through gentrification
13. Interactive Park on old plant site
14. Woodland Park Entrance
15. Consult the community
16. Design standards (talk to the neighborhood)
17. Strengthen 8th St as a corridor connecting Holiday to downtown
18. Moorhead's core needs its own Broadway Square. Better yet one very downtown and one near 8th and the colleges.
19. We need to gather to build community
20. Youth community center
21. More street lights in darker areas. Moorhead specific



- styles of hooded street lights
- 22. Create community in new neighborhoods instead of just plonking down houses
- 23. Balance on-street parking with bike lanes – crosswalk (enhance)
- 24. Every res. area should have walkable open space
- 25. Parks that are walkable
- 26. More places for people who stay at hotels – tourist
- 27. Lack of sidewalks with people with limited mobility. Strongly agree all across city
- 28. Trail connections w/ new construction
- 29. How do people get to park, retail?
- 30. Better connection to parks, retail and complete w/ Fargo

Focus Area Board (Monday): Viking Ship Park

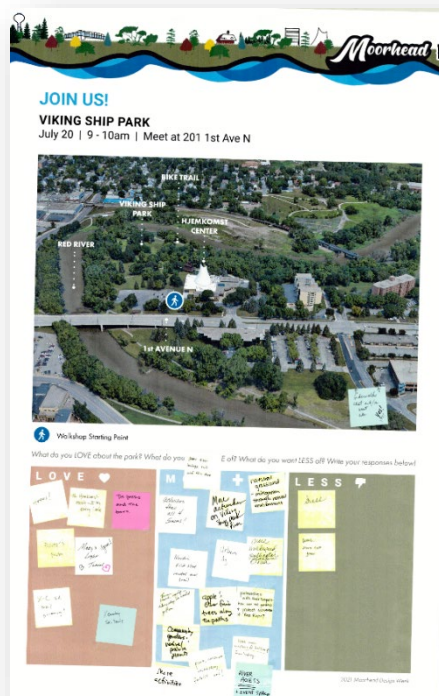
Participants were asked to add what they love, want more of, and want less of in this area.

Love

- Trees
- The Hjemkomst movie – I cry every time
- The paths and the trees
- Rivers and Parks
- Mary's Light Tunnel
- XC Ski Trail! Grooming!
- X Country Ski Trails

More

- Better River landing, trails, and focus there
- Activities thru all 4 seasons
- More activities on Viking Ship Park and River
- Natural grassland – mitigation through natural environment
- Nordic kick sled rental and trail
- Urban Ag
- More milkweed, pollinators plants, clover
- Theme based equips – Viking ship we could get on
- Apple and other fruit trees along the paths
- Partnership with River keepers – how can we preserve and protect ecosystem of Red River?
- Community gardens, native prairie plants
- Park, leisure amenities, public art!
- More activities



- Add more historical buildings from history
- River access and event space

Less

- Grass
- Weeds and cut grass

Other:

- Sidewalks east and or west side
- 2 other people agreed to the statement above



Walkshop (Tuesday): Viking Ship Park

Love

- River trail
- The church
- The tunnel
- Open spaces
- Trees
- The church
- The Center
- The lighted tunnel
- The events
- Recreational amenities along river – Moorhead has always been great culturally but not always recreationally

More

- Canoe rentals
- Canoe lockers
- Events
- River outlooks
- Art/placemaking

- Signage! Where to park?
- Maps, wayfinding
- Event infrastructure
- Access – sidewalks in surrounding area, downtown, further areas of Moorhead
- Design to support floodwater – grasses
- Fire rings
- Lighting
- Power access
- Waterfront
- Connection to greater MN trails
- History -> MHD District
- Missing places of park
 - Hardscaping
 - Perennial planting
 - Gateway
 - Statues
 - Fountains

- Other buildings reflecting other cultures

- Sidewalk connections
- River access
- Connection to DT Fargo
- Funding
- More staffing
- More licensure for navigation
- Floating buildings in floodplain
- Viking ship Park lacks elements of a signature park
- What is the front door of the park?
- Signage is needed

Less

- Sod
- Parking along highway

Focus Area Board (Monday): Downtown

Participants were asked to add what they love, want more of, and want less of in this area.

Love

- The little public art present
- Harold's 20 below
- No tax on clothes/shoes
- The library
- Variety of shops, restaurants, space for activities
- Harolds junkyard
- All the small businesses
- The Rourke! Pillar of our community
- Public art – graffiti walls and sculptures
- Sanctioned graffiti/murals! Good idea!

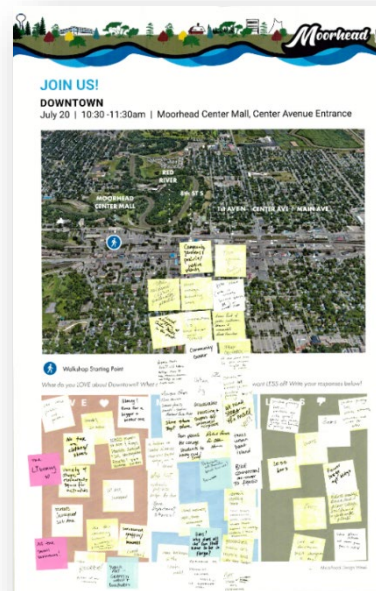
- The few remaining historic buildings – preserve our heritage!
- Sol. Ave Junkyard
- 56560 Murals at Ace and Rays, Harolds, Junkyard + Solm sticksgarden. Rourke!
- Library! Time for a bigger and better one

More

- Community gardens and prairie/native plants
- Town square, center mall
- More milkweed, clover, pollinator plants



- More college friendly bars
- Bike share (once actually becomes bikeable) or scooter share
- Loved shopping at center mall in the past
- Connection to the River and trails
- Some kind of public restrooms/showers to accommodate homeless
- Community Center
- Urban Orchards – At the dead ends by the railroad, maybe for a start
- Reverse trend. Rebuild old historic buildings. Mirror DT Fargo, Alexandria, Crookston, and Wahp. No crappy modern arch.
- Unique shops, live music, more family events – such as Moorhead cruise night
- **Urban Ag**
- Accessible housing and support for unhoused neighbors
- Shoe store, dept store
- **Fun places** for college students to hangout/shop
- Density build tall buildings, no surface parking
- We need stores in the mall
- Someone else agreed to the comment above
- Rehab funds for older homes
- Trees, urban heat island
- Bike connection on street to Fargo
- Restaurants with character (small business) Breweries
- A bakery on center avenue that uses crystal sugar, as a draw
- Wishlist: Hydraulic ped/bike bridge by dam
- More department stores
- **Small businesses**, cafes, shops, restaurants, etc
- Women's clothing store
- More shops, restaurants, bars, coffee shops that appeal to college students and their families
- More businesses in the center mall



- Bars! Why does all the fun stuff have to be in Fargo
- Repurpose or demolish center mall for alternate use
- Geocaches, public art, murals, and Little Free Gardens
- Art – static and performing.

Less

- Surface parking lots – reclaim our city space! Build one parking garage and eliminate parking lots
- Bars
- Bars
- **Less bars**
- Surface parking lots, dirty sidewalks, not made for bikes
- Fewer large apartment buildings
- Reduce grassy areas and plant clover, milkweed, and pollinator plants
- Bars
- Reduce clover and milkweeds and increase grass. Grass is cute!
- Lack of density – infill development is key!
- Bars



Walkshop (Tuesday): Downtown

Love

- The Murals
- Businesses (shops, DQ)
- DQ Community space
- Other restaurants on take note? Like KFC?
- Small businesses such as Harolds, Mick's, Vic's, Sol Ave
- When center is closed off for events like the car shows
- The potential
- The few remaining historic buildings
- Invite cars to slow town – trees, murals, traffic boxes wrapped
- Park area – beaver sculptures
- Kids can play and climbed on
- More people on edges of parks
- Wayfinding -> directing people to amenities (Viking Ship Park)
- Entrances to buildings

- Give space back to residents
- Bus Stops – not enough space – need to do significant snow removal
- Property owners – incentivize bus stops etc. in zoning code

More

- Texture/art work
- Perhaps include decorative/dynamic visual elements to the outer edges or perimeter of the sidewalks and paths
- Sidewalk facing storefronts
- Residence parking ramp mixed use space
- Sequenced lights
- Comfortable ped connections between attractions
- Bike lanes, particularly along center on 8th
- Trees!
- Businesses connected to the sidewalk

- Density! Build tall
- Mixed use
- Buildings like the Klenk building
- Green space
- Rooftop gardens
- Painted bike lanes

Less

- Uneven pavement
- Concrete
- “Vacant building appeal” opposite of curb appeal looks like the buildings isn’t used
- Surface parking lots
- Dirty walkways, full of sand and leaves
- Patchwork sidewalks that are rough
- Chain restaurants (except DQ)
- Parking lots! - surface parking
- One-story buildings and little buildings w/ huge parking lots
- Parking lots
- Garages – yes

Focus Area Board (Monday) and Walkshop (Tuesday) combined: EasTen

Participants were asked to add what they love, want more of, and want less of in this area.

Love

- Being a Spud
- Spud sporting events
- El Tererro x2
- Target, JL beers, cashwise, Boulder Tap
- Variety of stores and frontage access to them

- Bright skies, new and planned stable housing

More

- Trees-specifically along walking paths. Also more walking paths.
- Park, trees plus trails (Walking and biking)
- Continue to grow business here



- **Walkability** to downtown and river for low income families
- More fast – casual restaurants for high school student, high school activities, high school arena, lake goers.
- Community garden, native/prairie plants
- Community garden area
- Trees! Urban heat island effect more prevalent office, shops, restaurants, garden
- **Infill** development
- Safe for pedestrians, accessible – considering it is so sprawling
- Heated bus shelter
- Fill the vacant buildings with unique shops.
- Make more attractive somehow
- Bigger **trees** in medium to make more woodsy/more scenic
- An area that could be suited for events = currently none
- Parking lot and ugly storefront

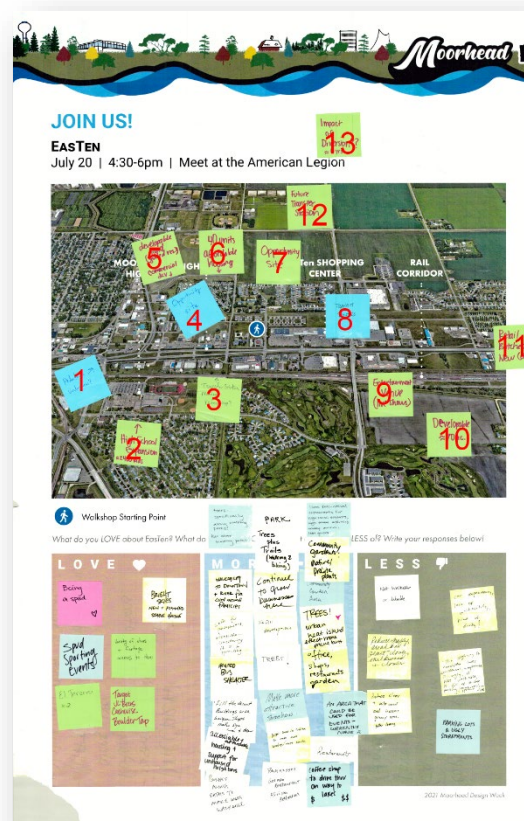
- Restaurants
- Coffee shop to drive thru on way to lakes
- Businesses, German restaurants, African restaurants
- Accessible and affordable housing and support for unhoused neighbors
- Bushes along paths to make more walkable

Less

- Not walkable or bikeable
- Car dependency, lack of walkability, kind of dirty
- Reduce grassy areas and plant milkweed and clover
- The highway 10 corridor looks accidental, unplanned, is **ugly**, is not walkable, if full of **surface parking** (encourages sprawl)

Others (see image for location)

1. Pedestrian underpass
2. **High school** expansion ~ 2400 kids
3. Transfer station
4. Opportunity Site
5. Developable land (guided res) commercial development
6. 40 units affordable housing
7. Opportunity site
8. Transfer routes
9. Entertainment venue (live shows)
10. Developable ~ 70 acres
11. Retail, butcher, new coffee
12. Future transfer [**transit**] station
13. Impact of diversity ~ 6 years





Focus Area Board (Monday) and Walkshop (Tuesday) combined: Holiday 1-94 & 8th Street

Participants were asked to add what they love, want more of, and want less of in this area.

Love

- Anxious to see that area grow with **traffic!**
- M State. Ed opportunities and convenience
- The potential that **M state** has to bring to the area

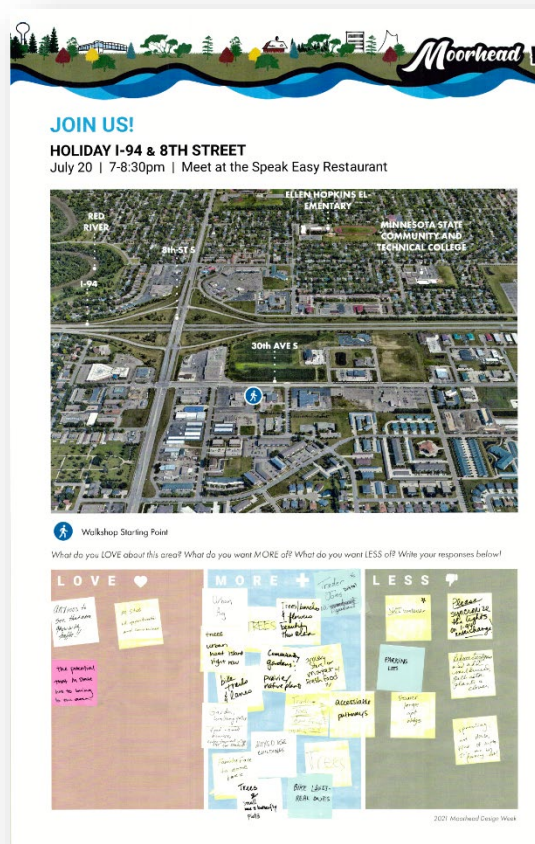
More

- Urban Ag
- **Trees**
- Trees, benches, and flowers. Beautify the area
- Trader Joes
- Trees urban heat island right now
- Bike trails and lanes
- Community gardens. Prairie/**native plants**
- Grocery store or market with fresh food
- Accessible pathways
- Trader Joes where family fair is
- Garden, walking paths, food, small business, entertainment college life for students
- Mixed used buildings
- Family fare to come back
- Trees and small bee and butterfly plots
- Trees
- Bike lanes – real ones

Less

- Not walkable
- Parking lots
- Fewer large apt buildings

- Please synchronize the lights on 1-94 interchange
- Reduce turf grass/ add milkweed pollinator plants and clover
- Sprawling, kind of empty. It's one big **parking** lot!





Focus Area Board (Tuesday): Comstock

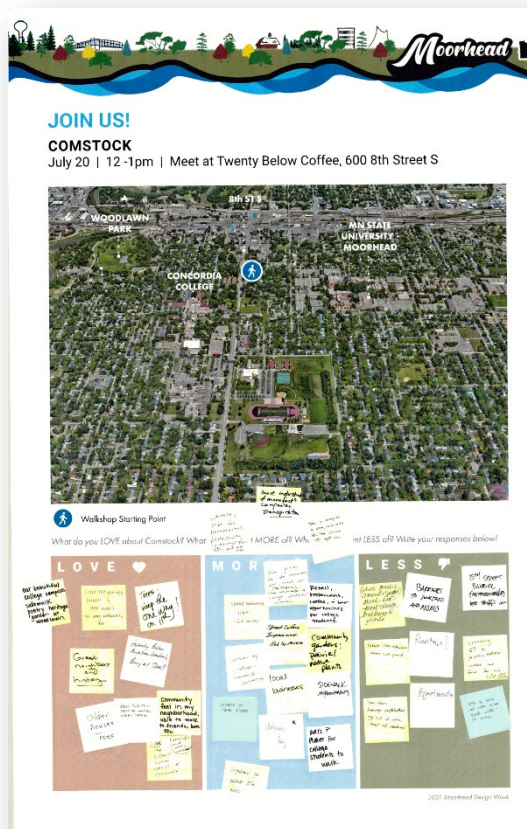
Participants were asked to add what they love, want more of, and want less of in this area.

Love

- Our beautiful college campuses, sidewalk poetry, heritage garden at wood lawn
- I love the one-off houses and tree cover! It's very walkable too
- Trees – keep the one way on 11th
- Great neighbors and history
- Twenty Below, awesome location. Busy at 7am
- Older houses **trees**
- Trees, plants in front of houses, green spaces
- **Community** feel in my neighborhood, able to walk to friends, bars, etc.
- Love the historic homes north of Concordia

More

- Bikeable, safe for pedestrians, pedestrian crossing for 8th that are safe
- More industrial and manufacturing companies. Transportation
- Trees in parking lots in MSUM, Conco parking lots. They are ugly right now.
- **Small businesses** like 20 below
- Fun places to do homework, eat, meet etc. (like 20 Below) take advantage of college students location
- Retail restaurant, coffee, and bar opportunities for college students.
- Street surface improvement – 11th by MSUM
- Community gardens, prairie/native plants
- Urban ag – college – community partnership
- Local businesses
- Sidewalk improvements
- Access to river
- **Urban Ag**
- Bars? Places for college students to walk



- Injections to protect Elm trees

Less

- Reduce grassy (mowed and sprayed) areas and plant clovers, milkweed plants
- Briers to junkyard and NOMO
- 8th st barrier
- Reduce clover, milkweed, increase cute grass
- **Rentals!**
- Apartments
- Tear down Romnkey neighborhood. It's full of crimes, drugs, and shootings
- **Crossing 8th st** anywhere. Makes me fear for my life (and I am young)
- 8th street does not need to be that wide – or busy



Walkshop (Tuesday): Comstock

Love

- Historic home housing stock. For the need of people that want to live in an older home
- The **stateliness** of the homes – they're beautiful
- Trees
- The remaining large homes on 8th - I love how they are still here and are used for either homes or businesses – they add to our history
- Density
- **Walkability**
- Safety
- Big trees
- Small businesses who work with the neighborhood from the beginning
- These conversations
- Walk tours
- Connections with teams/college students
- The old historic homes
- The tree-lined streets
- My favorite neighborhood in Moorhead

More

- Small projects to fill in blighted properties
- Small businesses like 20 below that are meeting spots for students
- Placemaking, historical markets

- Bike lanes
- Activation of neighborhoods
- Bodegas
- Lighting in the evening
- Planting and trees
- Attractive/neighborhood consistent lighting
- **Enforcement** – parking rules, landlord rules (lot/house maintenance)
- Accessibility features for those with disabilities
- Corner stores, mixed retails throughout
- Housing options/supply young families feel like they have to live in West Fargo because there isn't enough supply in this area
- Gathering spaces between downtown and Holiday along 8th like twenty below.

Less

- Large downtown
- Noise from 8th - kill the noise with trees and greenery
- **Vacant** homes
- Under loved areas
- Poorly run old-house rentals to multiples
- Broken sidewalks
- Dark sidewalk
- Parking

Focus Area Board (Monday): MCCARA

Participants were asked to add what they love, want more of, and want less of in this area.

Love

- This area is literary fine. No focus is needed

More

- Transportation for employees

- Bike access (separate trail path along HWY 52)
- Accessible pathways and sidewalks
- Bike and Alt transportation
- Urban Ag



Less

- Reduce grassy areas and plant pollinator milkweed and clover
- Reduce clover, milkweed, etc. Increase cute grass