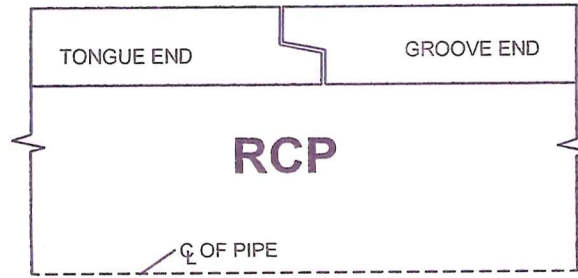
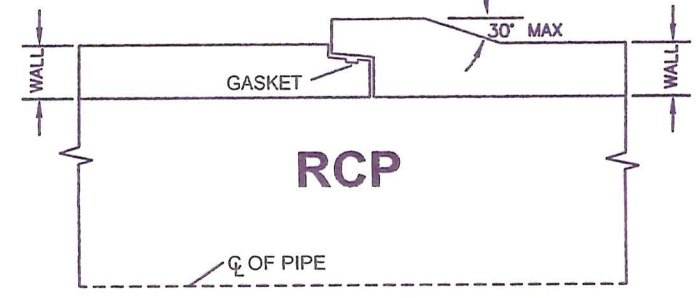


# STORM SEWER REPAIRS

(WITHIN CITY RIGHT-OF-WAY)



PIPE JOINT PLATE 3000



PIPE JOINT PLATE 3006  
 GASKET JOINT

**NOTES:**

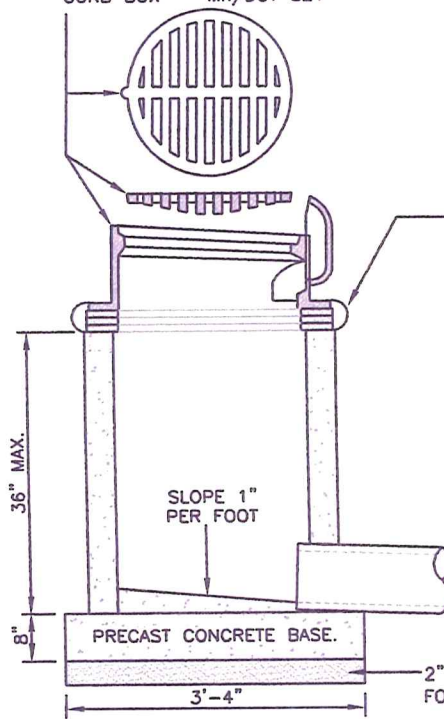
1. REINFORCEMENT NOT SHOWN
2. THERE SHALL BE 18" OPENINGS IN CONCRETE BARREL
3. TYPE "D" CASTING ASSEMBLY TO BE USED IN B-624 CURB & GUTTER
4. TYPE "C" CASTING ASSEMBLY TO BE USED IN TYPE "C" MOUNTABLE CURB & GUTTER, REAR YARD INLET AND STREET DRAINAGE SYSTEM

TYPE "D" CASTING ASSEMBLY  
 GRATE FRAME Mn/DOT 801  
 GRATE Mn/DOT 810  
 CURB BOX Mn/DOT 821

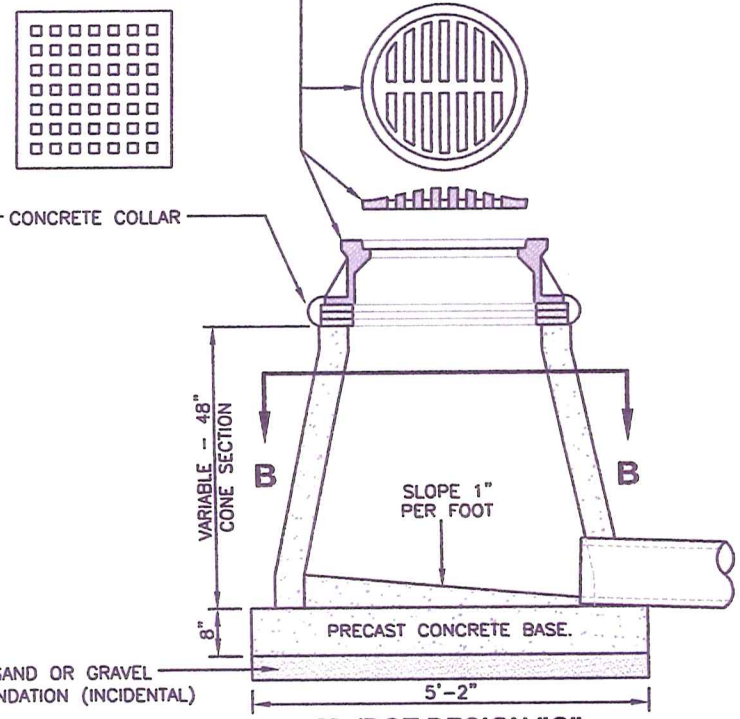
TYPE "C" CASTING ASSEMBLY  
 NEENAH CASTING ASSEMBLY  
 R3405 OR APPROVED EQUAL

TYPE "B" CASTING ASSEMBLY  
 RING Mn/DOT 700-7  
 GRATE Mn/DOT 720

**NOTE:**  
 STORM SEWER PIPING SHALL BE PROTECTED DURING EXCAVATION OPERATIONS. IF THE STORM SEWER SYSTEM IS DAMAGED, IT SHALL BE REPAIRED OR REPLACED WITH THE APPROVED TYPE OF PIPING. STORM SEWER REPAIRS TO THE EXISTING PIPING SYSTEM SHALL BE TO THE NEXT JOINT AND SHALL MATCH EXISTING SIZE AND TYPE (RCP SHALL BE EITHER MN/DOT DESIGN 3000 OR 3006 RCP PIPING) UNLESS OTHERWISE APPROVED BY THE ENGINEERING OFFICE. PVC PIPING WITH FERNCO BOOTS WILL NOT BE APPROVED. THE REPLACED PIPING SHALL BE GROUTED INTO THE ADJACENT MANHOLE OR CATCHBASIN INLET.



**Mn/DOT DESIGN "H"**  
 STANDARD PLATE NO. 4006L NOT TO SCALE



**Mn/DOT DESIGN "G"**  
 STANDARD PLATE NO. 4006L NOT TO SCALE

**MINIMUM STANDARDS FOR STORM SEWER REPAIRS**  
 NOT TO SCALE