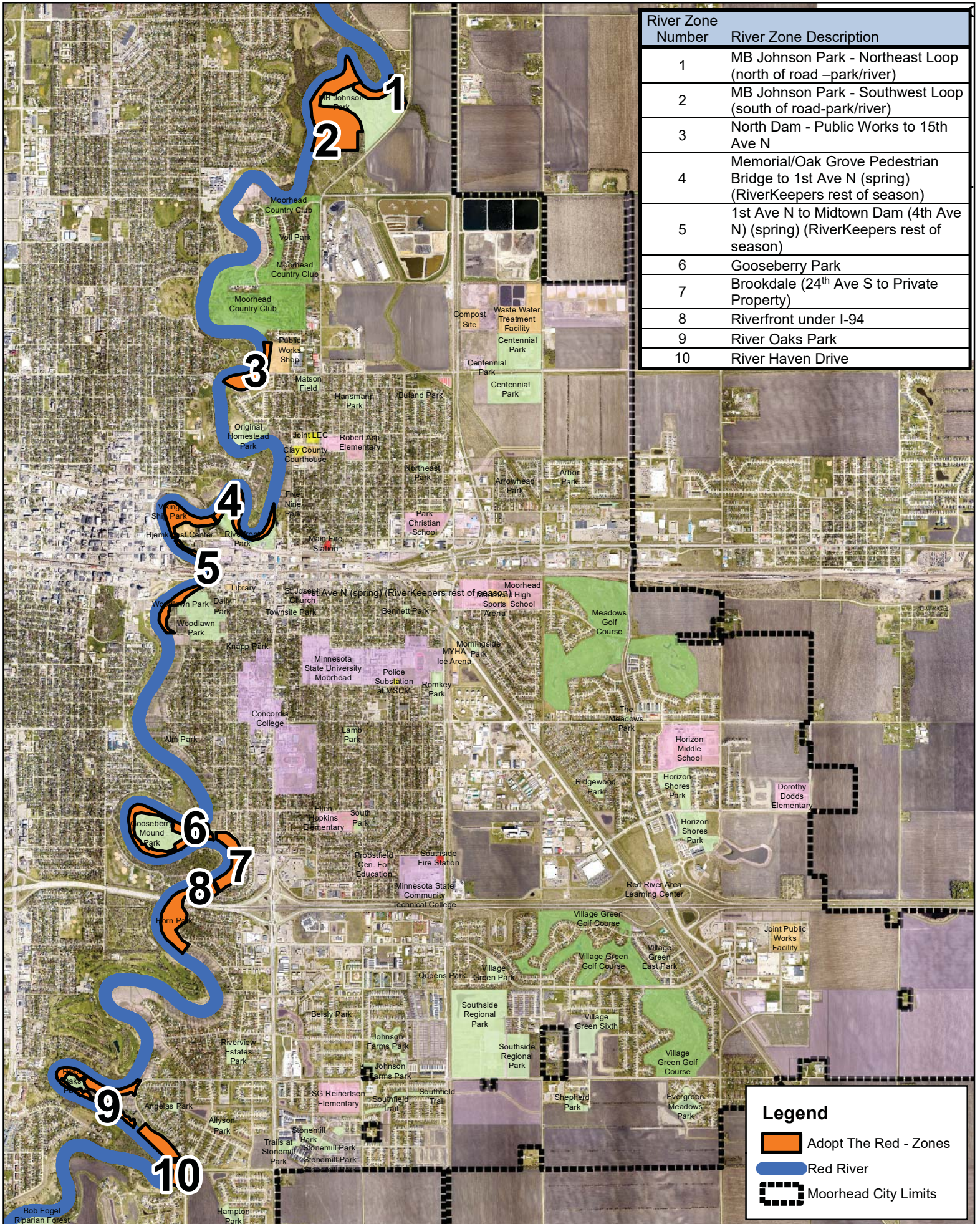





Adopt The Red



River Zone Number	River Zone Description
1	MB Johnson Park - Northeast Loop (north of road -park/river)
2	MB Johnson Park - Southwest Loop (south of road-park/river)
3	North Dam - Public Works to 15th Ave N
4	Memorial/Oak Grove Pedestrian Bridge to 1st Ave N (spring) (RiverKeepers rest of season)
5	1st Ave N to Midtown Dam (4th Ave N) (spring) (RiverKeepers rest of season)
6	Gooseberry Park
7	Brookdale (24 th Ave S to Private Property)
8	Riverfront under I-94
9	River Oaks Park
10	River Haven Drive

Legend

-  Adopt The Red - Zones
-  Red River
-  Moorhead City Limits

Adopt - the - Red

1 MB Johnson Park - Alyssa Nelson/Peace Lutheran Youth/Becky Mayers	River Drive 9 Ave to 12 Ave S - Curran/Kraft Family
2 MB Johnson Park - Ryan Sandven/Andrea Sattler	6 Gooseberry Park - FedEx Ground / Concordia Handball Team
3 North Dam	7 Brookdale - 24 Ave S to Private Property (1-94)
4 Memorial Bridge to 1st Ave N	8 Riverfront under 1-94 - Billi Jo Zelinski Family
5 1st Ave N to Midtown Dam (4th Ave N)	9 River Oaks Park - Cory Francis/SS Ruby Boat Tours LLC
Ditch 41 Buffalo-RR Watershed District	10 River Haven Dr - S.S. Ruby Boat Tours LLC

*Orange is Available to Adopt

*Black is Adopted