

Did you Know?

Storm drains are NOT connected to the sanitary sewer system or wastewater treatment plant. The primary purpose of the storm sewer system is to carry rainwater away from developed areas to prevent flooding.

In the City of Moorhead, storm drains flow directly into stormwater ponds, ditches and the Red River without treatment. Stormwater pollution is a serious problem for the natural environment and for the citizens who use the Red River for recreational use such as fishing, boating and canoeing. Stormwater pollution comes from a variety of sources including oil, fuel, and fluids from vehicles and heavy equipment, pesticides, and other hazardous materials.

The City of Moorhead is committed to improving water quality and reducing the amount of pollutants entering waterways.

www.cityofmoorhead.com

stormwater@ci.moorhead.mn.us

Recipient Name
Street Address
Address 2
City, ST ZIP Code

City of Moorhead
500 Center Ave
P.O. Box 779
Moorhead, MN 56560

Best Management Practices for Retail Gas Stations



City of Moorhead
Stormwater Pollution Prevention
24 Hour Stormwater Hotline 218.299.5386



Pollution Prevention

Retail gas stations, are a source of stormwater pollution. Fuel dispensing areas, trash bins, air/water supply areas and car washes can accumulate and discharge automotive fluids, grease, trash, and other materials that may be harmful to the environment. Discharging or disposing of these materials to the storm drain are considered an illicit discharge and are PROHIBITED by law.

Best Management Practices (BMPs)

BMPs are procedures and practices that help to prevent pollutants such as dirt, chemicals, trash, metals, pesticides, and other hazardous materials from entering the storm sewer system.

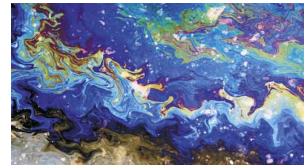
Solution

- Clean up spills as soon as they occur. Use dry methods such as rags or absorbent materials and dispose of properly.

- Contact the Fargo–Moorhead River Keepers about the storm drain marking program. Labeling a storm drain reminds people that anything discharged to the storm drain flows directly to the Red River.

Fuel, Air, and Water Dispensing Areas

- Fueling areas should ***never*** be hosed down unless the wash water is contained and disposed of to the sanitary sewer.
- Have spill containment and absorbents readily available for any spill that may occur.



Trash Areas

Minimize the possibility of stormwater pollution from outside trash bins by doing the following:

- Use only watertight bins and keep lids closed.
- Consider installing a berm around the waste bin.
- Consider installing a roof over the bin area.

Automatic Car Washes

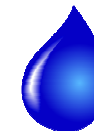
- Discharges from automatic car washes to the storm sewer are an illicit discharge.
- Use biodegradable, phosphate-free water based cleaner whenever possible.
- Store hazardous materials securely and make sure they are clearly labeled.



Charity Car Washes

Hosting charitable car washes at your gas station is not illegal; however any wash water generated on site must stay onsite. Wash water must be contained, collected and disposed of to the sanitary sewer system.

Instead of having the cars hand washed consider sponsoring car wash vouchers for your automatic car wash and share the proceeds with the organization.



Only Rain in the Storm Drain!