

Did You Know?

Storm drains are NOT connected to the sanitary sewer or wastewater treatment plant.

The primary purpose of a storm drain is to carry rainwater away from developed areas to prevent flooding. As rainwater flows over the ground it picks up a variety of pollutants which then flow to local stormwater ponds, ditches and the Red River.

Stormwater pollution comes from a variety of sources including dirt, debris, automotive fluids, pet waste, pesticides and other hazardous materials.

The City of Moorhead is committed to improving water quality and reducing the amount of pollutants entering waterways.



City of Moorhead

500 Center Ave
P.O. Box 779

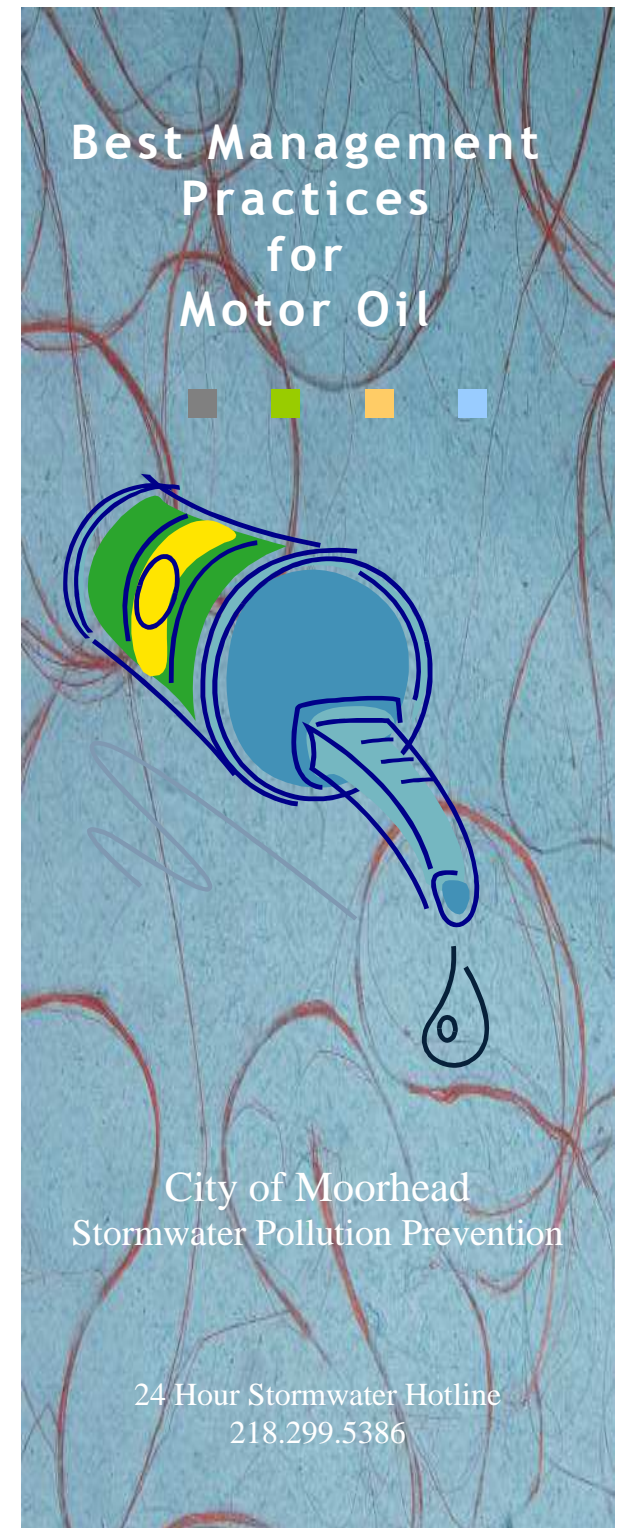
Moorhead, MN 56560

24 Hour Stormwater Hotline

218.299.5386

stormwater@ci.moorhead.mn.us

www.cityofmoorhead.com



WHAT'S THE PROBLEM WITH MOTOR OIL?

Did you know that dumping motor oil into storm drains is illegal? This is called an illicit discharge and is against the City of Moorhead Stormwater ordinance.

Automobiles are important and necessary for everyday life. That is why it is important to keep vehicles properly maintained.

Oil that leaks from vehicles onto roads and driveways washes into storm drains. The storm drains then flow into stormwater ponds, ditches and the Red River.

Motor oil is banned from Minnesota landfills. One quart of motor oil can contaminate 250,000 gallons of water. That is more than 30 people drink in a lifetime.

BEST MANAGEMENT PRACTICES (BMPs)

BMPs are procedures and practices that help to prevent pollutants such as dirt, chemicals, trash, metal, automotive fluids, and other pollutants from entering the storm sewer system.

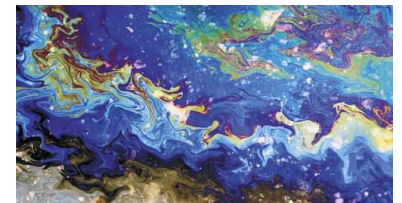


SOLUTION

- ◆ Stop drips. Check for oil leaks regularly and fix them promptly.
- ◆ Place ground cloths or drip pans beneath vehicles with leaks or while doing engine work.
- ◆ Clean up spills immediately.
- ◆ Collect all used oil in containers with tight fitting lids, and label the container.



- ◆ Dispose of used oil properly. Never dispose of oil or other engine fluids down the storm drain, on the ground, or into a ditch.
- ◆ Recycle used motor oil. Check out the Clay County Hazardous Waste Facility website at www.co.clay.mn.us for locations.



Only Rain in the Storm Drain!

