

CONSTRUCTION PLANS
FOR

STREET IMPROVEMENTS

EVERGREEN MEADOWS FIRST ADDITION
MOORHEAD MINNESOTA

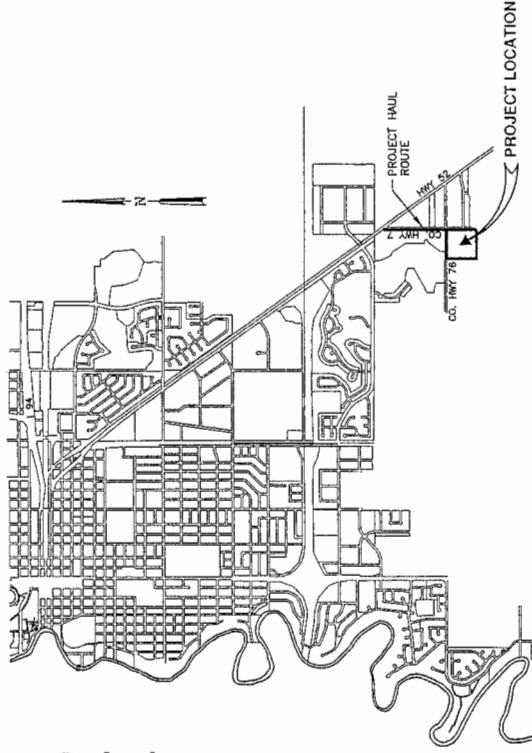
2004

CITY PROJECT NO. 04-A2-3



GENERAL NOTES

1. ALL INLETS, MANHOLES, AND GATE VALVES BY OTHERS ARE ADJUSTED BY THIS CONTRACT.
2. THE TOPSOIL STRIPPING WITHIN THE PROPOSED ROADWAY WAS REMOVED BY THE OWNER.
3. OWNER IS TO IMPORT AND PLACE 6,507 CY (CV) OF FILL NEAR THE EXISTING DITCH ALONG 38th STREET.



DRAWING INDEX

SHEET NO.	TITLE
1	COVER SHEET
2	STANDARD DETAILS CONCRETE SECTIONS
3	STANDARD DETAILS TYPICAL STREET SECTIONS
4	OVERALL STREET LAYOUT
5-7	PLAN AND PROFILE
8	BACKYARD DRAINAGE
9	EROSION CONTROL PLAN

I hereby certify that this plan, specifications, report, and proposed work were prepared by me or under my direct supervision, and that I am a duly Licensed Professional Engineer under the laws of the State of Minnesota.

James W. Longenecker
License No. 25293

Date: 4-27-04

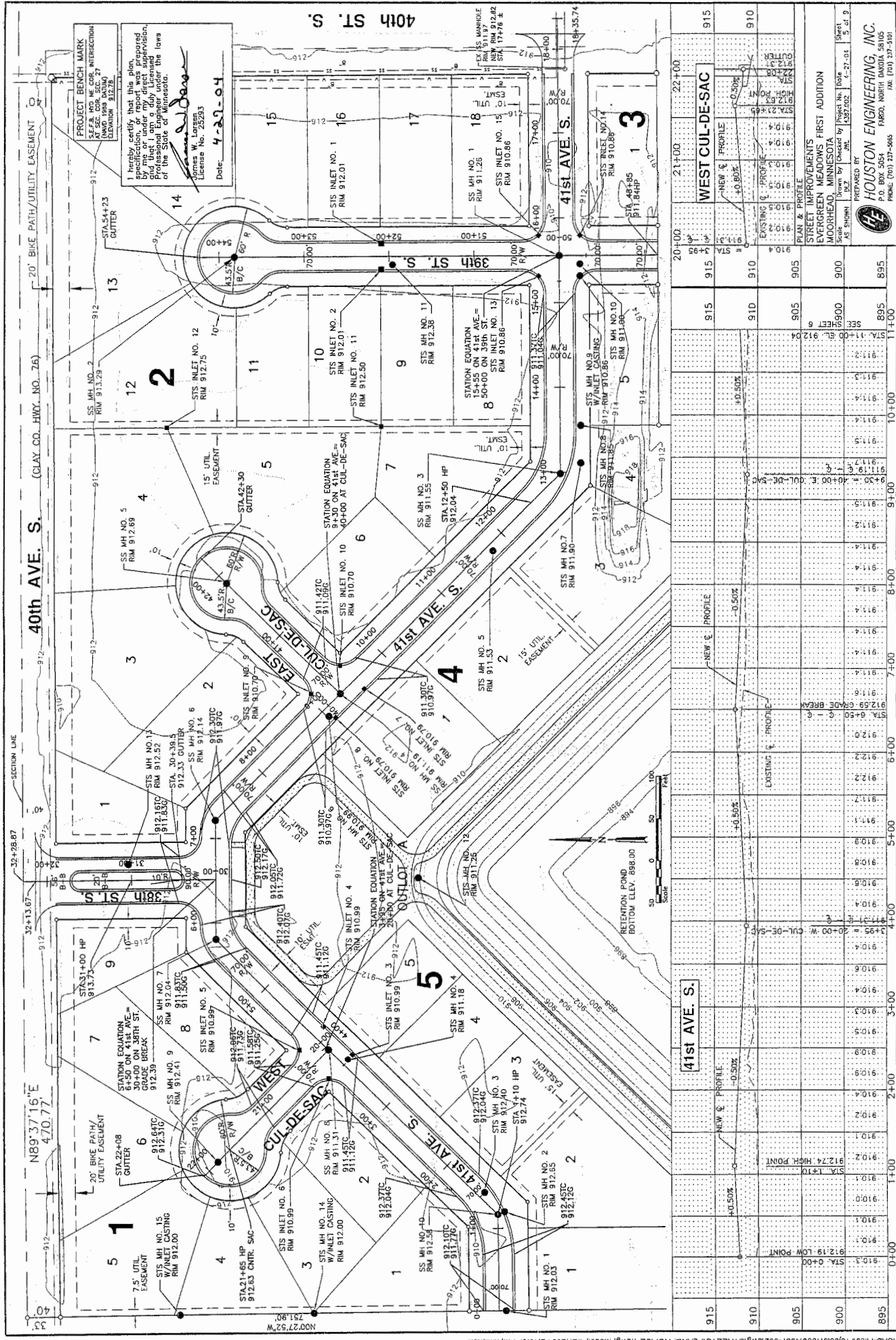


PREPARED BY:

HOUSTON ENGINEERING, INC.

FARGO, NORTH DAKOTA

FIGURE 3



STATION	EXISTING E. PROFILE	NEW E. PROFILE	NEW E. PROFILE
895	912.19	912.19	912.19
900	912.19	912.19	912.19
905	912.19	912.19	912.19
910	912.19	912.19	912.19
915	912.19	912.19	912.19
920	912.19	912.19	912.19
925	912.19	912.19	912.19
930	912.19	912.19	912.19
935	912.19	912.19	912.19
940	912.19	912.19	912.19
945	912.19	912.19	912.19
950	912.19	912.19	912.19
955	912.19	912.19	912.19
960	912.19	912.19	912.19
965	912.19	912.19	912.19
970	912.19	912.19	912.19
975	912.19	912.19	912.19
980	912.19	912.19	912.19
985	912.19	912.19	912.19
990	912.19	912.19	912.19
995	912.19	912.19	912.19
1000	912.19	912.19	912.19
1005	912.19	912.19	912.19
1010	912.19	912.19	912.19
1015	912.19	912.19	912.19
1020	912.19	912.19	912.19
1025	912.19	912.19	912.19
1030	912.19	912.19	912.19
1035	912.19	912.19	912.19
1040	912.19	912.19	912.19
1045	912.19	912.19	912.19
1050	912.19	912.19	912.19
1055	912.19	912.19	912.19
1060	912.19	912.19	912.19
1065	912.19	912.19	912.19
1070	912.19	912.19	912.19
1075	912.19	912.19	912.19
1080	912.19	912.19	912.19
1085	912.19	912.19	912.19
1090	912.19	912.19	912.19
1095	912.19	912.19	912.19
1100	912.19	912.19	912.19
1105	912.19	912.19	912.19
1110	912.19	912.19	912.19
1115	912.19	912.19	912.19
1120	912.19	912.19	912.19
1125	912.19	912.19	912.19
1130	912.19	912.19	912.19
1135	912.19	912.19	912.19
1140	912.19	912.19	912.19
1145	912.19	912.19	912.19
1150	912.19	912.19	912.19
1155	912.19	912.19	912.19
1160	912.19	912.19	912.19
1165	912.19	912.19	912.19
1170	912.19	912.19	912.19
1175	912.19	912.19	912.19
1180	912.19	912.19	912.19
1185	912.19	912.19	912.19
1190	912.19	912.19	912.19
1195	912.19	912.19	912.19
1200	912.19	912.19	912.19

STREET IMPROVEMENTS
 EVERGREEN MEADOWS FIRST ADDITION
 MOORHEAD, MINNESOTA
 SHEET NO. 1 OF 9
 PROJECT NO. 137-002
 DATE: 6-27-01
 PREPARED BY
HOUSTON ENGINEERING, INC.
 P.O. BOX 5084
 FARMO, NORTH DAKOTA 58005
 PHONE: (701) 237-5665 FAX: (701) 237-3101

1. I hereby certify that this plan, specification, and report were prepared by me or under my direct supervision, and that I am a duly Licensed Professional Engineer for the State of Minnesota.

James W. Larsen
 License No. 23283
 Date: 4-27-04

PROJECT BENCH MARK
 SEE PLAN FOR COR. INTERSECTION
 AT SEC. COR. SEC. 27
 ELEVATION 912.78

SS MH NO. 2
 RIM 913.29

SS MH NO. 5
 RIM 912.89

SS MH NO. 11
 RIM 912.38

SS MH NO. 14
 RIM 912.00

SS MH NO. 15
 RIM 912.00

SS MH NO. 16
 RIM 912.00

SS MH NO. 17
 RIM 912.00

SS MH NO. 18
 RIM 912.00

SS MH NO. 19
 RIM 912.00

SS MH NO. 20
 RIM 912.00

SS MH NO. 21
 RIM 912.00

SS MH NO. 22
 RIM 912.00

SS MH NO. 23
 RIM 912.00

SS MH NO. 24
 RIM 912.00

SS MH NO. 25
 RIM 912.00

SS MH NO. 26
 RIM 912.00

SS MH NO. 27
 RIM 912.00

SS MH NO. 28
 RIM 912.00

SS MH NO. 29
 RIM 912.00

SS MH NO. 30
 RIM 912.00

SS MH NO. 31
 RIM 912.00

SS MH NO. 32
 RIM 912.00

SS MH NO. 33
 RIM 912.00

SS MH NO. 34
 RIM 912.00

SS MH NO. 35
 RIM 912.00

SS MH NO. 36
 RIM 912.00

SS MH NO. 37
 RIM 912.00

SS MH NO. 38
 RIM 912.00

SS MH NO. 39
 RIM 912.00

SS MH NO. 40
 RIM 912.00

SS MH NO. 41
 RIM 912.00

SS MH NO. 42
 RIM 912.00

SS MH NO. 43
 RIM 912.00

SS MH NO. 44
 RIM 912.00

SS MH NO. 45
 RIM 912.00

SS MH NO. 46
 RIM 912.00

SS MH NO. 47
 RIM 912.00

SS MH NO. 48
 RIM 912.00

SS MH NO. 49
 RIM 912.00

SS MH NO. 50
 RIM 912.00

SS MH NO. 51
 RIM 912.00

SS MH NO. 52
 RIM 912.00

SS MH NO. 53
 RIM 912.00

SS MH NO. 54
 RIM 912.00

SS MH NO. 55
 RIM 912.00

SS MH NO. 56
 RIM 912.00

SS MH NO. 57
 RIM 912.00

SS MH NO. 58
 RIM 912.00

SS MH NO. 59
 RIM 912.00

SS MH NO. 60
 RIM 912.00

SS MH NO. 61
 RIM 912.00

SS MH NO. 62
 RIM 912.00

SS MH NO. 63
 RIM 912.00

SS MH NO. 64
 RIM 912.00

SS MH NO. 65
 RIM 912.00

SS MH NO. 66
 RIM 912.00

SS MH NO. 67
 RIM 912.00

SS MH NO. 68
 RIM 912.00

SS MH NO. 69
 RIM 912.00

SS MH NO. 70
 RIM 912.00

SS MH NO. 71
 RIM 912.00

SS MH NO. 72
 RIM 912.00

SS MH NO. 73
 RIM 912.00

SS MH NO. 74
 RIM 912.00

SS MH NO. 75
 RIM 912.00

SS MH NO. 76
 RIM 912.00

SS MH NO. 77
 RIM 912.00

SS MH NO. 78
 RIM 912.00

SS MH NO. 79
 RIM 912.00

SS MH NO. 80
 RIM 912.00

SS MH NO. 81
 RIM 912.00

SS MH NO. 82
 RIM 912.00

SS MH NO. 83
 RIM 912.00

SS MH NO. 84
 RIM 912.00

SS MH NO. 85
 RIM 912.00

SS MH NO. 86
 RIM 912.00

SS MH NO. 87
 RIM 912.00

SS MH NO. 88
 RIM 912.00

SS MH NO. 89
 RIM 912.00

SS MH NO. 90
 RIM 912.00

SS MH NO. 91
 RIM 912.00

SS MH NO. 92
 RIM 912.00

SS MH NO. 93
 RIM 912.00

SS MH NO. 94
 RIM 912.00

SS MH NO. 95
 RIM 912.00

SS MH NO. 96
 RIM 912.00

SS MH NO. 97
 RIM 912.00

SS MH NO. 98
 RIM 912.00

SS MH NO. 99
 RIM 912.00

SS MH NO. 100
 RIM 912.00

SS MH NO. 101
 RIM 912.00

SS MH NO. 102
 RIM 912.00

SS MH NO. 103
 RIM 912.00

SS MH NO. 104
 RIM 912.00

SS MH NO. 105
 RIM 912.00

SS MH NO. 106
 RIM 912.00

SS MH NO. 107
 RIM 912.00

SS MH NO. 108
 RIM 912.00

SS MH NO. 109
 RIM 912.00

SS MH NO. 110
 RIM 912.00

SS MH NO. 111
 RIM 912.00

SS MH NO. 112
 RIM 912.00

SS MH NO. 113
 RIM 912.00

SS MH NO. 114
 RIM 912.00

SS MH NO. 115
 RIM 912.00

SS MH NO. 116
 RIM 912.00

SS MH NO. 117
 RIM 912.00

SS MH NO. 118
 RIM 912.00

SS MH NO. 119
 RIM 912.00

SS MH NO. 120
 RIM 912.00

SS MH NO. 121
 RIM 912.00

SS MH NO. 122
 RIM 912.00

SS MH NO. 123
 RIM 912.00

SS MH NO. 124
 RIM 912.00

SS MH NO. 125
 RIM 912.00

SS MH NO. 126
 RIM 912.00

SS MH NO. 127
 RIM 912.00

SS MH NO. 128
 RIM 912.00

SS MH NO. 129
 RIM 912.00

SS MH NO. 130
 RIM 912.00

SS MH NO. 131
 RIM 912.00

SS MH NO. 132
 RIM 912.00

SS MH NO. 133
 RIM 912.00

SS MH NO. 134
 RIM 912.00

SS MH NO. 135
 RIM 912.00

SS MH NO. 136
 RIM 912.00

SS MH NO. 137
 RIM 912.00

SS MH NO. 138
 RIM 912.00

SS MH NO. 139
 RIM 912.00

SS MH NO. 140
 RIM 912.00

SS MH NO. 141
 RIM 912.00

SS MH NO. 142
 RIM 912.00

SS MH NO. 143
 RIM 912.00

SS MH NO. 144
 RIM 912.00

SS MH NO. 145
 RIM 912.00

SS MH NO. 146
 RIM 912.00

SS MH NO. 147
 RIM 912.00

SS MH NO. 148
 RIM 912.00

SS MH NO. 149
 RIM 912.00

SS MH NO. 150
 RIM 912.00

SS MH NO. 151
 RIM 912.00

SS MH NO. 152
 RIM 912.00

SS MH NO. 153
 RIM 912.00

SS MH NO. 154
 RIM 912.00

SS MH NO. 155
 RIM 912.00

SS MH NO. 156
 RIM 912.00

SS MH NO. 157
 RIM 912.00

SS MH NO. 158
 RIM 912.00

SS MH NO. 159
 RIM 912.00

SS MH NO. 160
 RIM 912.00

SS MH NO. 161
 RIM 912.00

SS MH NO. 162
 RIM 912.00

SS MH NO. 163
 RIM 912.00

SS MH NO. 164
 RIM 912.00

SS MH NO. 165
 RIM 912.00

SS MH NO. 166
 RIM 912.00

SS MH NO. 167
 RIM 912.00

SS MH NO. 168
 RIM 912.00

SS MH NO. 169
 RIM 912.00

SS MH NO. 170
 RIM 912.00

SS MH NO. 171
 RIM 912.00

SS MH NO. 172
 RIM 912.00

SS MH NO. 173
 RIM 912.00

SS MH NO. 174
 RIM 912.00

SS MH NO. 175
 RIM 912.00

SS MH NO. 176
 RIM 912.00

SS MH NO. 177
 RIM 912.00

SS MH NO. 178
 RIM 912.00

SS MH NO. 179
 RIM 912.00

SS MH NO. 180
 RIM 912.00

SS MH NO. 181
 RIM 912.00

SS MH NO. 182
 RIM 912.00

SS MH NO. 183
 RIM 912.00

SS MH NO. 184
 RIM 912.00

SS MH NO. 185
 RIM 912.00

SS MH NO. 186
 RIM 912.00

SS MH NO. 187
 RIM 912.00

SS MH NO. 188
 RIM 912.00

SS MH NO. 189
 RIM 912.00

SS MH NO. 190
 RIM 912.00

SS MH NO. 191
 RIM 912.00

SS MH NO. 192
 RIM 912.00

SS MH NO. 193
 RIM 912.00

SS MH NO. 194
 RIM 912.00

SS MH NO. 195
 RIM 912.00

SS MH NO. 196
 RIM 912.00

SS MH NO. 197
 RIM 912.00

SS MH NO. 198
 RIM 912.00

SS MH NO. 199
 RIM 912.00

SS MH NO. 200
 RIM 912.00

SS MH NO. 201
 RIM 912.00

SS MH NO. 202
 RIM 912.00

SS MH NO. 203
 RIM 912.00

SS MH NO. 204
 RIM 912.00

SS MH NO. 205
 RIM 912.00

SS MH NO. 206
 RIM 912.00

SS MH NO. 207
 RIM 912.00

SS MH NO. 208
 RIM 912.00

SS MH NO. 209
 RIM 912.00

SS MH NO. 210
 RIM 912.00

SS MH NO. 211
 RIM 912.00

SS MH NO. 212
 RIM 912.00

SS MH NO. 213
 RIM 912.00

SS MH NO. 214
 RIM 912.00

SS MH NO. 215
 RIM 912.00

SS MH NO. 216
 RIM 912.00

SS MH NO. 217
 RIM 912.00

SS MH NO. 218
 RIM 912.00

SS MH NO. 219
 RIM 912.00

SS MH NO. 220
 RIM 912.00

SS MH NO. 221
 RIM 912.00

SS MH NO. 222
 RIM 912.00

SS MH NO. 223
 RIM 912.00

SS MH NO. 224
 RIM 912.00

SS MH NO. 225
 RIM 912.00

SS MH NO. 226
 RIM 912.00

SS MH NO. 227
 RIM 912.00

SS MH NO. 228
 RIM 912.00

SS MH NO. 229
 RIM 912.00

SS MH NO. 230
 RIM 912.00

SS MH NO. 231
 RIM 912.00

SS MH NO. 232
 RIM 912.00

SS MH NO. 233
 RIM 912.00

SS MH NO. 234
 RIM 912.00

SS MH NO. 235
 RIM 912.00

SS MH NO. 236
 RIM 912.00

SS MH NO. 237
 RIM 912.00

SS MH NO. 238
 RIM 912.00

SS MH NO. 239
 RIM 912.00

SS MH NO. 240
 RIM 912.00

SS MH NO. 241
 RIM 912.00

SS MH NO. 242
 RIM 912.00

SS MH NO. 243
 RIM 912.00

SS MH NO. 244
 RIM 912.00

SS MH NO. 245
 RIM 912.00

SS MH NO. 246
 RIM 912.00

SS MH NO. 247
 RIM 912.00

SS MH NO. 248
 RIM 912.00

SS MH NO. 249
 RIM 912.00

SS MH NO. 250
 RIM 912.00

SS MH NO. 251
 RIM 912.00

SS MH NO. 252
 RIM 912.00

SS MH NO. 253
 RIM 912.00

SS MH NO. 254
 RIM 912.00

SS MH NO. 255
 RIM 912.00

SS MH NO. 256
 RIM 912.00

SS MH NO. 257
 RIM 912.00

SS MH NO. 258
 RIM 912.00

SS MH NO. 259
 RIM 912.00

SS MH NO. 260
 RIM 912.00

SS MH NO. 261
 RIM 912.00

SS MH NO. 262
 RIM 912.00

SS MH NO. 263
 RIM 912.00

SS MH NO. 264
 RIM 912.00

SS MH NO. 265
 RIM 912.00

SS MH NO. 266
 RIM 912.00

SS MH NO. 267
 RIM 912.00

SS MH NO. 268
 RIM 912.00

SS MH NO. 269
 RIM 912.00

SS MH NO. 270
 RIM 912.00

SS MH NO. 271
 RIM 912.00

SS MH NO. 272
 RIM 912.00

SS MH NO. 273
 RIM 912.00

SS MH NO. 274
 RIM 912.00

SS MH NO. 275
 RIM 912.00

SS MH NO. 276
 RIM 912.00

SS MH NO. 277
 RIM 912.00

SS MH NO. 278
 RIM 912.00

SS MH NO. 279
 RIM 912.00

SS MH NO. 280
 RIM 912.00

SS MH NO. 281
 RIM 912.00

SS MH NO. 282
 RIM 912.00

SS MH NO. 283
 RIM 912.00

SS MH NO. 284
 RIM 912.00

SS MH NO. 285
 RIM 912.00

SS MH NO. 286
 RIM 912.00

SS MH NO. 287
 RIM 912.00

SS MH NO. 288
 RIM 912.00

SS MH NO. 289
 RIM 912.00

SS MH NO. 290
 RIM 912.00

SS MH NO. 291
 RIM 912.00

SS MH NO. 292
 RIM 912.00

SS MH NO. 293
 RIM 912.00

SS MH NO. 294
 RIM 912.00

SS MH NO. 295
 RIM 912.00

SS MH NO. 296
 RIM 912.00

SS MH NO. 297
 RIM 912.00

SS MH NO. 298
 RIM 912.00

SS MH NO. 299
 RIM 912.00

SS MH NO. 300
 RIM 912.00

SS MH NO. 301
 RIM 912.00

SS MH NO. 302
 RIM 912.00

SS MH NO. 303
 RIM 912.00

SS MH NO. 304
 RIM 912.00

SS MH NO. 305
 RIM 912.00

SS MH NO. 306
 RIM 912.00

SS MH NO. 307
 RIM 912.00

SS MH NO. 308
 RIM 912.00

SS MH NO. 309
 RIM 912.00

SS MH NO. 310
 RIM 912.00

SS MH NO. 311
 RIM 912.00

SS MH NO. 312
 RIM 912.00

SS MH NO. 313
 RIM 912.00

SS MH NO. 314
 RIM 912.00

SS MH NO. 315
 RIM 912.00

SS MH NO. 316
 RIM 912.00

SS MH NO. 317
 RIM 912.00

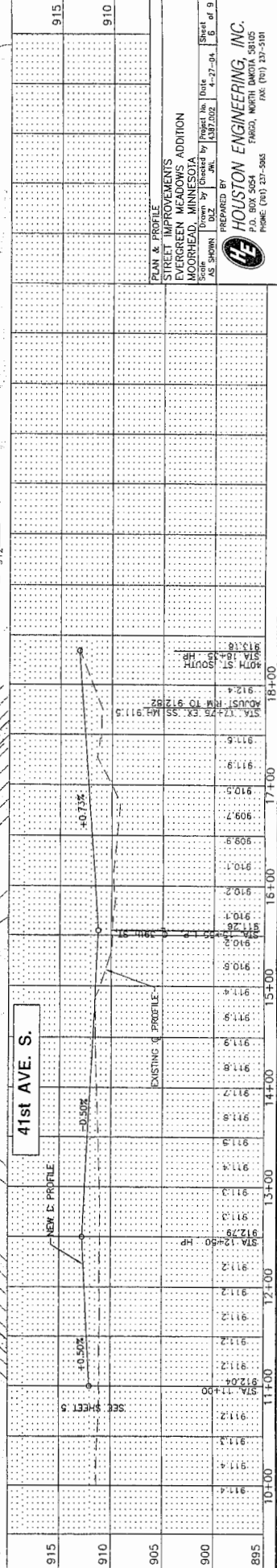
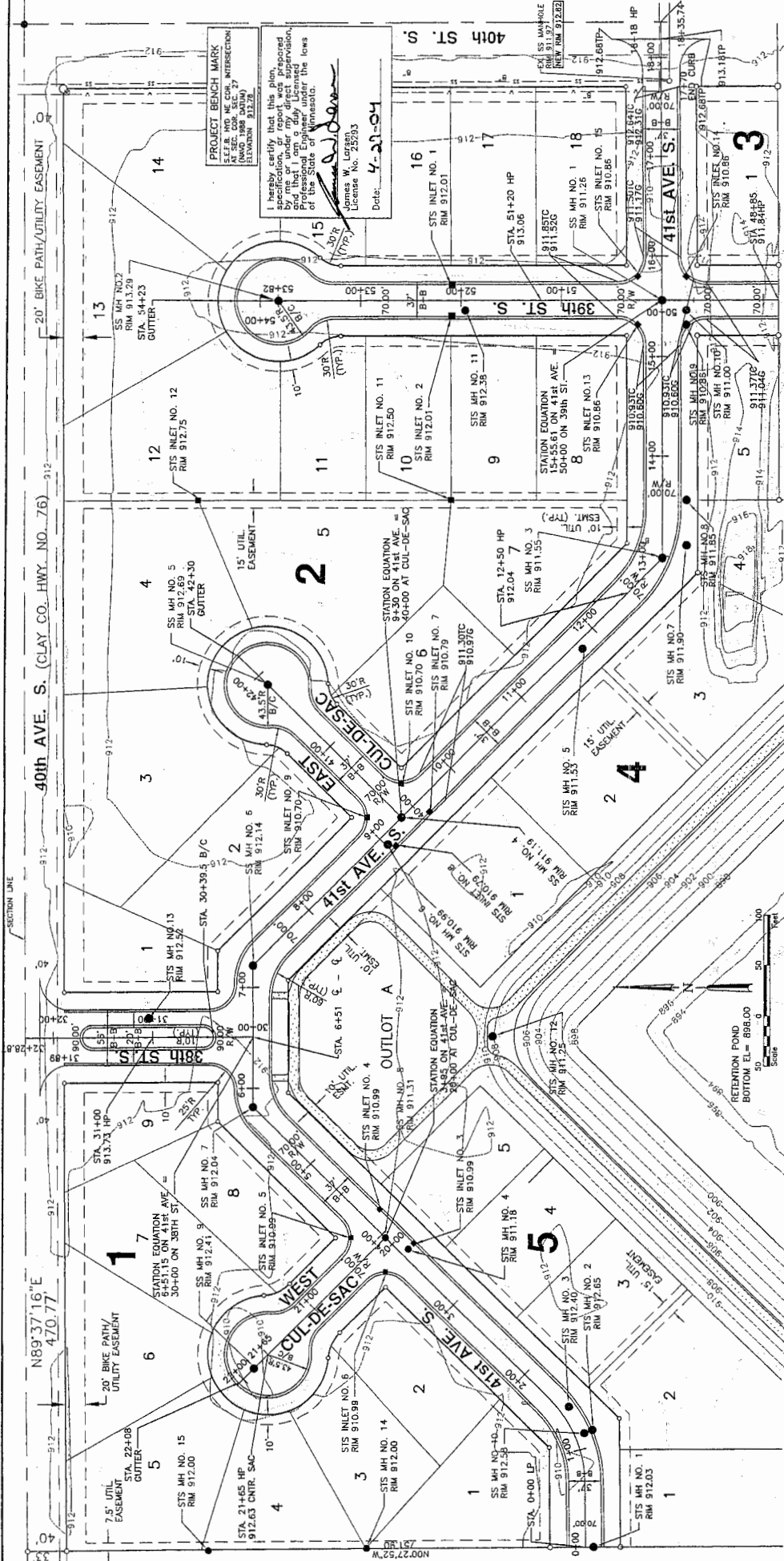
SS MH NO. 318
 RIM 912.00

SS MH NO. 319
 RIM 912.00

SS MH NO. 320
 RIM 912.00

SS MH NO. 321
 RIM 912.00

SS MH NO. 322
 RIM 912.00</



PROJECT BENCH MARK
 AT THE MECHANICAL INTERSECTION
 OF 41st AVE S AND 39th ST S
 (MAY 1988 DATUM)
 (ELEVATION 912.20)

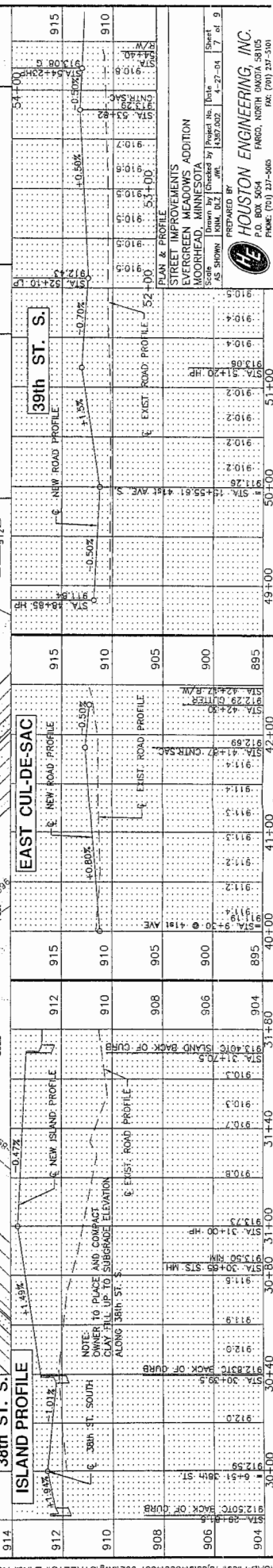
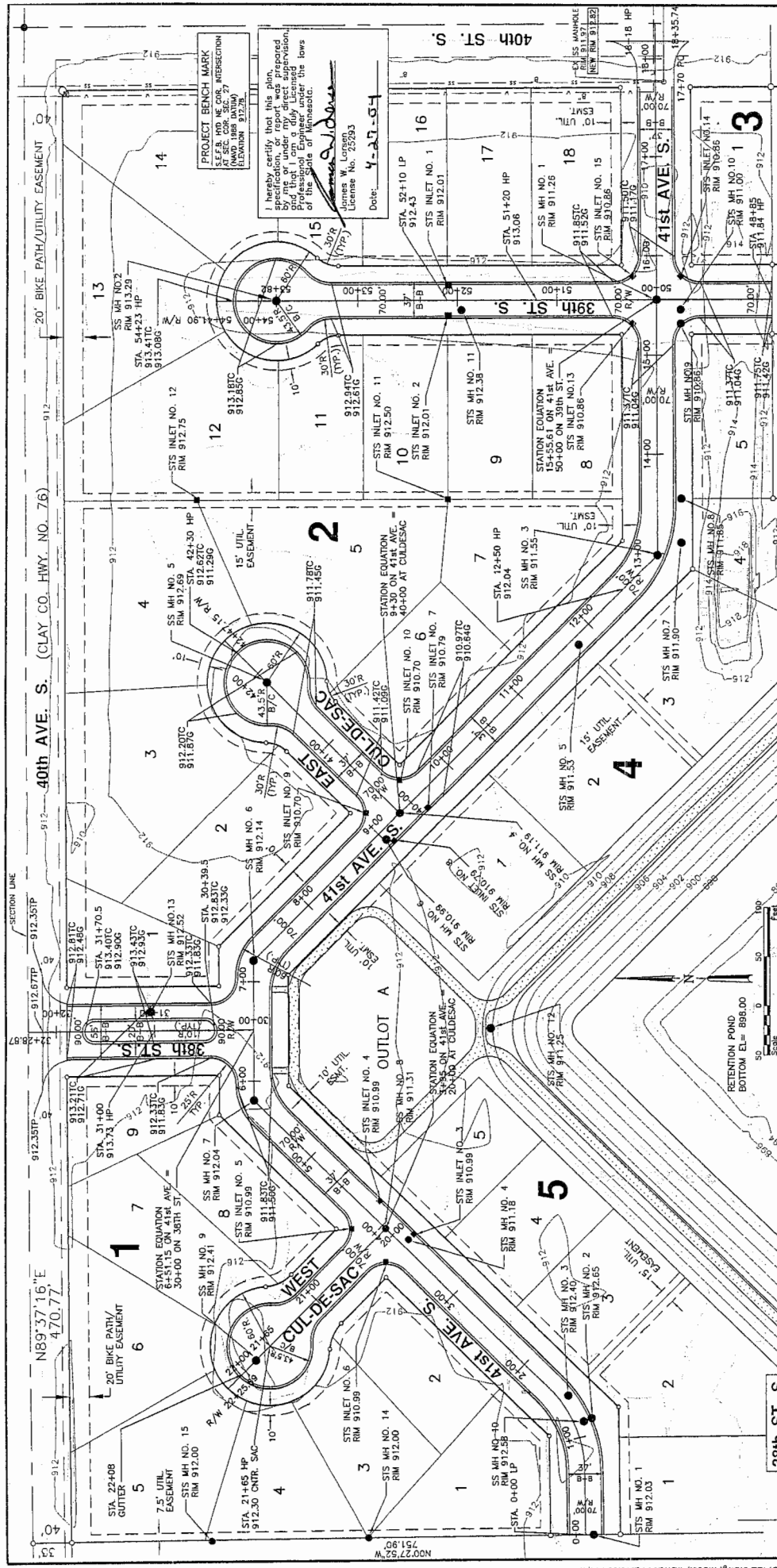
I hereby certify that this plan, specification, or report was prepared by me or under my direct supervision, and that I am a duly Licensed Professional Engineer under the laws of the State of Minnesota.

James W. Lergen
 License No. 25993
 Date: 4-21-04

PLAN & PROFILE
STREET IMPROVEMENTS
 EVERGREEN MEADOWS ADDITION
 MOORHEAD, MINNESOTA

Scale: AS SHOWN
 Drawn by: JHL
 Checked by: JHL
 Date: 4-27-04
 Sheet 6 of 9

HOUSTON ENGINEERING, INC.
 P.O. BOX 3054
 MOORHEAD, MINN. 56505
 PHONE (701) 231-9865

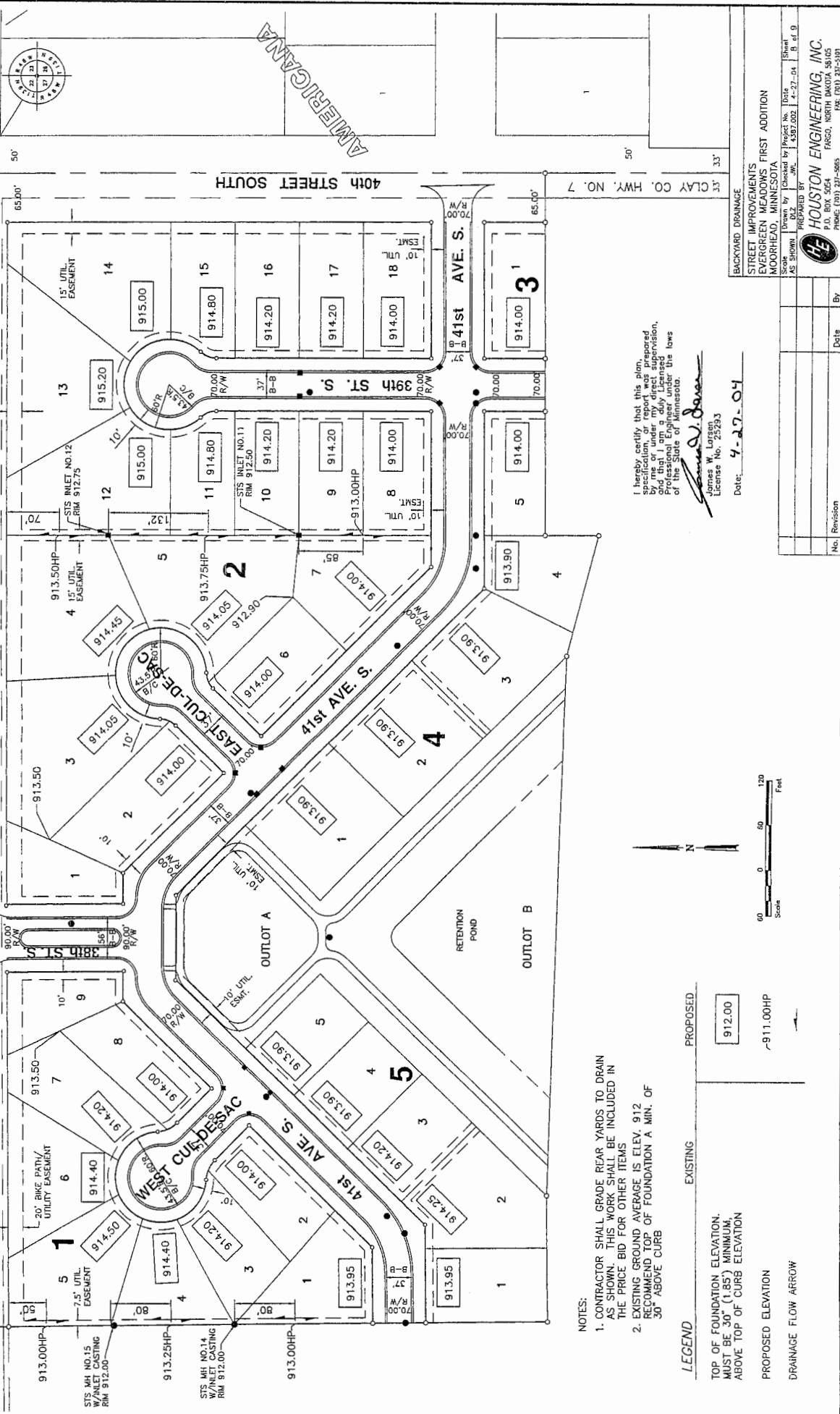


Station	Elevation	Profile Type
30+00	912.00	BACK OF CURB
30+10	911.50	BACK OF CURB
30+20	911.00	BACK OF CURB
30+30	910.50	BACK OF CURB
30+40	910.00	BACK OF CURB
30+50	909.50	BACK OF CURB
30+60	909.00	BACK OF CURB
30+70	908.50	BACK OF CURB
30+80	908.00	BACK OF CURB
30+90	907.50	BACK OF CURB
31+00	907.00	BACK OF CURB
31+10	906.50	BACK OF CURB
31+20	906.00	BACK OF CURB
31+30	905.50	BACK OF CURB
31+40	905.00	BACK OF CURB
31+50	904.50	BACK OF CURB
31+60	904.00	BACK OF CURB
31+70	903.50	BACK OF CURB
31+80	903.00	BACK OF CURB
31+90	902.50	BACK OF CURB
32+00	902.00	BACK OF CURB
32+10	901.50	BACK OF CURB
32+20	901.00	BACK OF CURB
32+30	900.50	BACK OF CURB
32+40	900.00	BACK OF CURB
32+50	899.50	BACK OF CURB
32+60	899.00	BACK OF CURB
32+70	898.50	BACK OF CURB
32+80	898.00	BACK OF CURB
32+90	897.50	BACK OF CURB
33+00	897.00	BACK OF CURB
33+10	896.50	BACK OF CURB
33+20	896.00	BACK OF CURB
33+30	895.50	BACK OF CURB
33+40	895.00	BACK OF CURB
33+50	894.50	BACK OF CURB
33+60	894.00	BACK OF CURB
33+70	893.50	BACK OF CURB
33+80	893.00	BACK OF CURB
33+90	892.50	BACK OF CURB
34+00	892.00	BACK OF CURB
34+10	891.50	BACK OF CURB
34+20	891.00	BACK OF CURB
34+30	890.50	BACK OF CURB
34+40	890.00	BACK OF CURB
34+50	889.50	BACK OF CURB
34+60	889.00	BACK OF CURB
34+70	888.50	BACK OF CURB
34+80	888.00	BACK OF CURB
34+90	887.50	BACK OF CURB
35+00	887.00	BACK OF CURB
35+10	886.50	BACK OF CURB
35+20	886.00	BACK OF CURB
35+30	885.50	BACK OF CURB
35+40	885.00	BACK OF CURB
35+50	884.50	BACK OF CURB
35+60	884.00	BACK OF CURB
35+70	883.50	BACK OF CURB
35+80	883.00	BACK OF CURB
35+90	882.50	BACK OF CURB
36+00	882.00	BACK OF CURB
36+10	881.50	BACK OF CURB
36+20	881.00	BACK OF CURB
36+30	880.50	BACK OF CURB
36+40	880.00	BACK OF CURB
36+50	879.50	BACK OF CURB
36+60	879.00	BACK OF CURB
36+70	878.50	BACK OF CURB
36+80	878.00	BACK OF CURB
36+90	877.50	BACK OF CURB
37+00	877.00	BACK OF CURB
37+10	876.50	BACK OF CURB
37+20	876.00	BACK OF CURB
37+30	875.50	BACK OF CURB
37+40	875.00	BACK OF CURB
37+50	874.50	BACK OF CURB
37+60	874.00	BACK OF CURB
37+70	873.50	BACK OF CURB
37+80	873.00	BACK OF CURB
37+90	872.50	BACK OF CURB
38+00	872.00	BACK OF CURB
38+10	871.50	BACK OF CURB
38+20	871.00	BACK OF CURB
38+30	870.50	BACK OF CURB
38+40	870.00	BACK OF CURB
38+50	869.50	BACK OF CURB
38+60	869.00	BACK OF CURB
38+70	868.50	BACK OF CURB
38+80	868.00	BACK OF CURB
38+90	867.50	BACK OF CURB
39+00	867.00	BACK OF CURB
39+10	866.50	BACK OF CURB
39+20	866.00	BACK OF CURB
39+30	865.50	BACK OF CURB
39+40	865.00	BACK OF CURB
39+50	864.50	BACK OF CURB
39+60	864.00	BACK OF CURB
39+70	863.50	BACK OF CURB
39+80	863.00	BACK OF CURB
39+90	862.50	BACK OF CURB
40+00	862.00	BACK OF CURB
40+10	861.50	BACK OF CURB
40+20	861.00	BACK OF CURB
40+30	860.50	BACK OF CURB
40+40	860.00	BACK OF CURB
40+50	859.50	BACK OF CURB
40+60	859.00	BACK OF CURB
40+70	858.50	BACK OF CURB
40+80	858.00	BACK OF CURB
40+90	857.50	BACK OF CURB
41+00	857.00	BACK OF CURB
41+10	856.50	BACK OF CURB
41+20	856.00	BACK OF CURB
41+30	855.50	BACK OF CURB
41+40	855.00	BACK OF CURB
41+50	854.50	BACK OF CURB
41+60	854.00	BACK OF CURB
41+70	853.50	BACK OF CURB
41+80	853.00	BACK OF CURB
41+90	852.50	BACK OF CURB
42+00	852.00	BACK OF CURB
42+10	851.50	BACK OF CURB
42+20	851.00	BACK OF CURB
42+30	850.50	BACK OF CURB
42+40	850.00	BACK OF CURB
42+50	849.50	BACK OF CURB
42+60	849.00	BACK OF CURB
42+70	848.50	BACK OF CURB
42+80	848.00	BACK OF CURB
42+90	847.50	BACK OF CURB
43+00	847.00	BACK OF CURB
43+10	846.50	BACK OF CURB
43+20	846.00	BACK OF CURB
43+30	845.50	BACK OF CURB
43+40	845.00	BACK OF CURB
43+50	844.50	BACK OF CURB
43+60	844.00	BACK OF CURB
43+70	843.50	BACK OF CURB
43+80	843.00	BACK OF CURB
43+90	842.50	BACK OF CURB
44+00	842.00	BACK OF CURB
44+10	841.50	BACK OF CURB
44+20	841.00	BACK OF CURB
44+30	840.50	BACK OF CURB
44+40	840.00	BACK OF CURB
44+50	839.50	BACK OF CURB
44+60	839.00	BACK OF CURB
44+70	838.50	BACK OF CURB
44+80	838.00	BACK OF CURB
44+90	837.50	BACK OF CURB
45+00	837.00	BACK OF CURB
45+10	836.50	BACK OF CURB
45+20	836.00	BACK OF CURB
45+30	835.50	BACK OF CURB
45+40	835.00	BACK OF CURB
45+50	834.50	BACK OF CURB
45+60	834.00	BACK OF CURB
45+70	833.50	BACK OF CURB
45+80	833.00	BACK OF CURB
45+90	832.50	BACK OF CURB
46+00	832.00	BACK OF CURB
46+10	831.50	BACK OF CURB
46+20	831.00	BACK OF CURB
46+30	830.50	BACK OF CURB
46+40	830.00	BACK OF CURB
46+50	829.50	BACK OF CURB
46+60	829.00	BACK OF CURB
46+70	828.50	BACK OF CURB
46+80	828.00	BACK OF CURB
46+90	827.50	BACK OF CURB
47+00	827.00	BACK OF CURB
47+10	826.50	BACK OF CURB
47+20	826.00	BACK OF CURB
47+30	825.50	BACK OF CURB
47+40	825.00	BACK OF CURB
47+50	824.50	BACK OF CURB
47+60	824.00	BACK OF CURB
47+70	823.50	BACK OF CURB
47+80	823.00	BACK OF CURB
47+90	822.50	BACK OF CURB
48+00	822.00	BACK OF CURB
48+10	821.50	BACK OF CURB
48+20	821.00	BACK OF CURB
48+30	820.50	BACK OF CURB
48+40	820.00	BACK OF CURB
48+50	819.50	BACK OF CURB
48+60	819.00	BACK OF CURB
48+70	818.50	BACK OF CURB
48+80	818.00	BACK OF CURB
48+90	817.50	BACK OF CURB
49+00	817.00	BACK OF CURB
49+10	816.50	BACK OF CURB
49+20	816.00	BACK OF CURB
49+30	815.50	BACK OF CURB
49+40	815.00	BACK OF CURB
49+50	814.50	BACK OF CURB
49+60	814.00	BACK OF CURB
49+70	813.50	BACK OF CURB
49+80	813.00	BACK OF CURB
49+90	812.50	BACK OF CURB
50+00	812.00	BACK OF CURB
50+10	811.50	BACK OF CURB
50+20	811.00	BACK OF CURB
50+30	810.50	BACK OF CURB
50+40	810.00	BACK OF CURB
50+50	809.50	BACK OF CURB
50+60	809.00	BACK OF CURB
50+70	808.50	BACK OF CURB
50+80	808.00	BACK OF CURB
50+90	807.50	BACK OF CURB
51+00	807.00	BACK OF CURB
51+10	806.50	BACK OF CURB
51+20	806.00	BACK OF CURB
51+30	805.50	BACK OF CURB
51+40	805.00	BACK OF CURB
51+50	804.50	BACK OF CURB
51+60	804.00	BACK OF CURB
51+70	803.50	BACK OF CURB
51+80	803.00	BACK OF CURB
51+90	802.50	BACK OF CURB
52+00	802.00	BACK OF CURB
52+10	801.50	BACK OF CURB
52+20	801.00	BACK OF CURB
52+30	800.50	BACK OF CURB
52+40	800.00	BACK OF CURB
52+50	799.50	BACK OF CURB
52+60	799.00	BACK OF CURB
52+70	798.50	BACK OF CURB
52+80	798.00	BACK OF CURB
52+90	797.50	BACK OF CURB
53+00	797.00	BACK OF CURB
53+10	796.50	BACK OF CURB
53+20	796.00	BACK OF CURB
53+30	795.50	BACK OF CURB
53+40	795.00	BACK OF CURB
53+50	794.50	BACK OF CURB
53+60	794.00	BACK OF CURB
53+70	793.50	BACK OF CURB
53+80	793.00	BACK OF CURB
53+90	792.50	BACK OF CURB
54+00	792.00	BACK OF CURB
54+10	791.50	BACK OF CURB
54+20	791.00	BACK OF CURB
54+30	790.50	BACK OF CURB
54+40	790.00	BACK OF CURB
54+50	789.50	BACK OF CURB
54+60	789.00	BACK OF CURB
54+70	788.50	BACK OF CURB
54+80	788.00	BACK OF CURB
54+90	787.50	BACK OF CURB
55+00	787.00	BACK OF CURB
55+10	786.50	BACK OF CURB
55+20	786.00	BACK OF CURB
55+30	785.50	BACK OF CURB
55+40	785.00	BACK OF CURB
55+50	784.50	BACK OF CURB
55+60	784.00	BACK OF CURB
55+70	783.50	BACK OF CURB
55+80	783.00	BACK OF CURB
55+90	782.50	BACK OF CURB
56+00	782.00	BACK OF CURB
56+10	781.50	BACK OF CURB
56+20	781.00	BACK OF CURB
56+30	780.50	BACK OF CURB
56+40	780.00	BACK OF CURB
56+50	779.50	BACK OF CURB
56+60	779.00	BACK OF CURB
56+70	778.50	BACK OF CURB
56+80	778.00	BACK OF CURB
56+90	777.50	BACK OF CURB
57+00	777.00	BACK OF CURB
57+10	776.50	BACK OF CURB
57+20	776.00	BACK OF CURB
57+30	775.50	BACK OF CURB
57+40	775.00	BACK OF CURB
57+50	774.50	BACK OF CURB
57+60	774.00	BACK OF CURB
57+70	773.50	BACK OF CURB
57+80	773.00	BACK OF CURB
57+90	772.50	BACK OF CURB
58+00	772.00	BACK OF CURB
58+10	771.50	BACK OF CURB
58+20	771.00	BACK OF CURB
58+30	770.50	BACK OF CURB
58+40	770.00	BACK OF CURB
58+50	769.50	BACK OF CURB
58+60	769.00	BACK OF CURB
58+70	768.50	BACK OF CURB
58+80	768.00	BACK OF CURB
58+90	767.50	BACK OF CURB
59+00	767.00	BACK OF CURB
59+10	766.50	BACK OF CURB
59+20	766.00	BACK OF CURB
59+30	765.50	BACK OF CURB
59+40	765.00	BACK OF CURB
59+50	764.50	BACK OF CURB

VILLAGE GREEN GOLF COURSE

CLAY COUNTY HIGHWAY NO. 76

N89°37'19"E
470.77'



I hereby certify that this plan, specification, or report was prepared by me or under my direct supervision and that I am a duly Licensed Professional Engineer under the laws of the State of Minnesota.

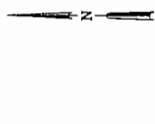
James W. Larsen
James W. Larsen
License No. 25293

Date: 4-27-04

- NOTES:
- CONTRACTOR SHALL GRADE REAR YARDS TO DRAIN AS SHOWN. THIS WORK SHALL BE INCLUDED IN THE PRICE BID FOR OTHER ITEMS
 - EXISTING GROUND AVERAGE IS ELEV. 912. RECOMMEND TOP OF FOUNDATION A MIN. OF 30" ABOVE CURB

LEGEND

PROPOSED	EXISTING
TOP OF FOUNDATION ELEVATION. MUST BE 30" (1.85') MINIMUM, ABOVE TOP OF CURB ELEVATION	912.00
PROPOSED ELEVATION	~911.00HP
DRAINAGE FLOW ARROW	



BACKYARD DRAINAGE
STREET IMPROVEMENTS
EVERGREEN MEADOWS FIRST ADDITION
MOORHEAD, MINNESOTA

Scale: AS SHOWN
Drawn by: [Name]
Checked by: [Name]
Prepared by: [Name]
Date: 4-27-04

Sheet: B of 9

HOUSTON ENGINEERING, INC.
P.O. Box 100
FARGO, NORTH DAKOTA 58103
PHONE: (701) 237-5665 FAX: (701) 237-5665

No.	Revision	Date	By

