

### DID YOU KNOW?

Storm drains are NOT connected to sanitary sewer systems or the wastewater treatment plant.

### WHAT ARE STORM DRAINS?

The primary purpose of a storm drain is to carry rainwater away from developed areas to prevent flooding. As rainwater flows on the ground it picks up a variety of pollutants that flow into local stormwater ponds, ditches, and the Red River.

### STORMWATER POLLUTION

Stormwater pollution comes from many sources including dirt, debris, automotive fluids, pet waste, pesticides and other hazardous materials.

The City of Moorhead is committed to improving water quality and reducing the amount of pollutants entering waterways.



City of Moorhead

500 Center Ave

P.O. Box 779

Moorhead, MN 56560

24 Hour Stormwater Hotline 218.299.5386

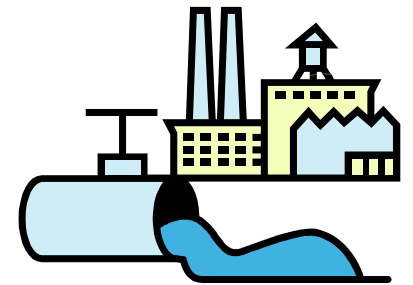
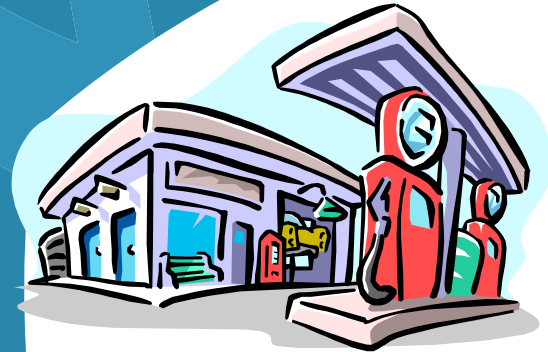
[stormwater@ci.moorhead.mn.us](mailto:stormwater@ci.moorhead.mn.us)

[www.cityofmoorhead.com](http://www.cityofmoorhead.com)

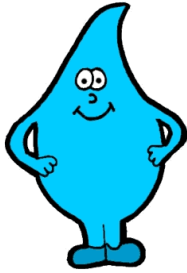
## Best Management Practices for BUSINESSES

### Commercial and Industrial

#### City of Moorhead Stormwater Pollution Prevention Program



24 Hour Stormwater Hotline 218.299.5386



# Only Rain in the Storm Drain!

## BEST MANAGEMENT PRACTICES (BMPs)

BMPs are procedures and practices used to prevent pollutants and other hazardous materials from entering the storm sewer system. Once potential and existing sources of pollutants have been identified, the next step is to select the proper BMPs to eliminate or reduce stormwater pollution

## POLLUTANTS OF CONCERN INCLUDE:

- ◆ Sediment
- ◆ Trash and Debris
- ◆ Pesticides
- ◆ Fertilizers
- ◆ Metals
- ◆ Chemicals
- ◆ Cleaners, soaps, & detergent
- ◆ Oil and Grease
- ◆ Pet Waste

## PREVENTIVE MAINTENANCE

- ◆ Keep equipment and vehicles in good working condition. Inspect frequently for leaks and repair as needed.
- ◆ Clean gutters and catch basins regularly to prevent pollutants from entering the storm sewer system.
- ◆ Label all storm drain inlets on your property. **NO DUMPING DRAINS TO RIVER.** Contact the FM River Keepers about the Storm Drain Marking Program.



## GOOD HOUSEKEEPING

- ◆ Instead of using a hose or pressure washing system, try a dry cleanup method! Use mops, brooms or wire brushes to clean dumpsters, sidewalks, buildings, equipment, pavement, driveways and other impervious surfaces. Wash water should be disposed to the sanitary sewer, NEVER to the storm sewer.
- ◆ Minimize the use of cleaning solutions and agents.
- ◆ Keep site free of litter and debris. Place trash cans and recycling bins around the site to minimize litter.



## MATERIAL STORAGE AND HANDLING

- ◆ When possible, store materials indoors or under a covered area not exposed to rain. If materials can not be stored under cover, place the material on pallets and cover them with a tarp to avoid contact with stormwater run-off.
- ◆ Store liquids, hazardous waste and other chemicals in a designated area with secondary containment. Keep outdoor storage areas in good condition.

## WASTE MANAGEMENT

- ◆ Sweep up around dumpsters and other areas frequently to prevent trash from accumulating.
- ◆ Dumpsters should always be kept closed to prevent rainwater from entering. Never place liquid waste, leaky garbage bags and hazardous waste in a dumpster or trash bin.
- ◆ Recycle cans, bottles, newspaper, office paper, and cardboard.

## VEHICLE WASHING AND CLEANING

- ◆ Wash company vehicles at a commercial car wash whenever possible. If vehicles are washed onsite, wash water must be contained and disposed of to the sanitary sewer.

## SPILL RESPONSE

- ◆ Use brooms and absorbents such as kitty litter or sawdust to clean up small spills. Report significant spills to the Stormwater staff immediately. For hazardous spills contact the Moorhead Fire Department.
- ◆ Write and keep current spill response plan. Ensure that all employees are trained on the elements of the plan.
- ◆ Keep rags, mops, and absorbents readily accessible. Dispose of waste properly.

## EMPLOYEE TRAINING

- ◆ Discuss and distribute information on stormwater pollution prevention during employee training sessions and at employee meetings.
- ◆ Post good housekeeping tips and reminders on employee bulletin boards.
- ◆ Inform subcontractors about the new stormwater requirements and their responsibilities.